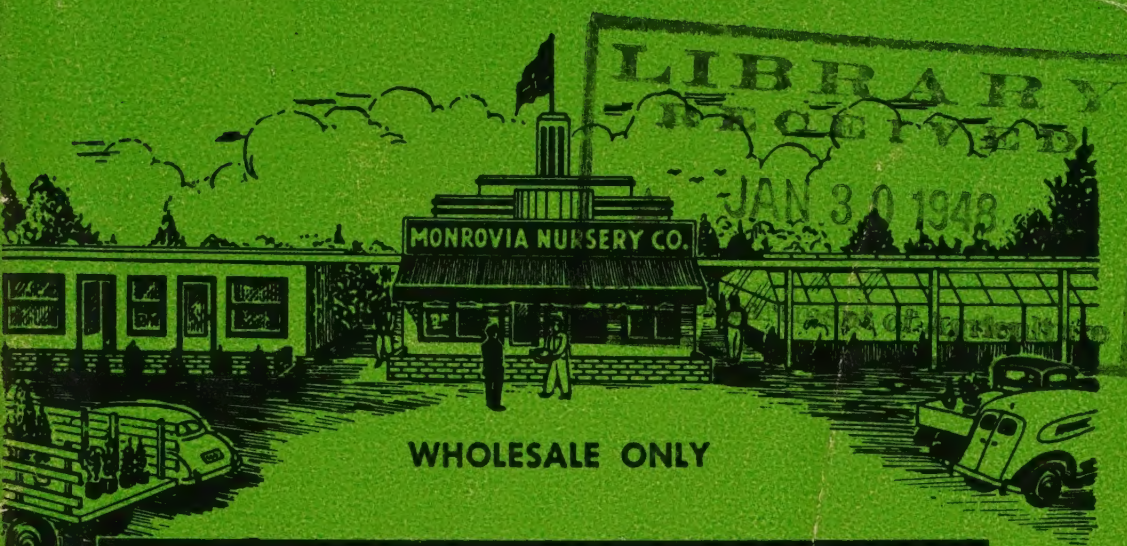


Historic, Archive Document

Do not assume content reflects current scientific knowledge, policies, or practices.

62.09

1947-1948 WHOLESALE CATALOG



WHOLESALE ONLY

monrovia Nursery Co.

DUARTE ROAD AND MYRTLE AVE.

Phone, Monrovia 96

Post Office Box 196

MONROVIA, CALIF.



ROSEDALE FIRETHORN (Trade Mark Reg.)

PLEASE KEEP FOR REFERENCE

SPECIAL LISTINGS

	Page No.
Azaleas	4
Camellias	8
Hibiscus	36
Hydrangea	38
Pyracantha Rosedale	53
List of Trees, Vines, etc.	61
Cross Reference of Common and Botanical Names	62

TERMS—No discount will be allowed, as it is our policy to maintain attractive prices, consistent with high quality stock. The issuance of this catalog automatically cancels all previous quotations. It is understood that all orders accepted are subject to stock at the time of delivery. 30 days net. On overdue accounts a charge of 6% per annum will be made.

DELIVERY—Free delivery in the Los Angeles Metropolitan area, San Bernardino, Riverside, San Diego and Santa Barbara. We do not pay transportation charges on shipments not covered by our free delivery service. To more distant points we will use the safest and least expensive method unless specific instructions are given.

PACKING—On orders not delivered to our free delivery zone, less than car load or truck load lots, a charge for packing material will be made at cost.

CLAIMS—Claims must be made immediately upon receipt of goods. If an error has been made by us, please notify us promptly, and we shall take pleasure in adjusting the matter. We do not guarantee plants to live. At no time will we be responsible for more than the purchase price of the stock ordered.

We carefully pack all stock, and make every effort to secure prompt and careful handling by the transportation company. However, our responsibility ceases upon delivery of stock in good condition to the transportation company. Claims for damage or delay in transit should be filed with the transportation company. In this connection we shall be glad to assist you in any way we can.

WE ARE A PINK TICKET NURSERY—It certifies that stock from which shipment is made has been found free of pests not of general distribution in Los Angeles County and is released for planting in said county without further inspection.

While every effort is made to produce the highest quality nursery stock, free of harmful pests, we cannot guarantee clearance at point of destination. It is therefore to be understood by the buyer that Monrovia Nursery Company can not be held responsible for the cost of rejected shipments or the transportation charges.

ACKNOWLEDGEMENT—Your orders will be acknowledged promptly and shipments made as quickly as possible, so if your order is not acknowledged please advise us immediately. Sometimes, because of inclement weather, or the press of business, there may be a slight delay in shipping, but we assure you that this will not be more than is absolutely necessary.

NON-WARRANTY—The Monrovia Nursery Company will exercise care to have all plants true to name. Nevertheless, it is understood that should any plant prove otherwise, we shall not be liable for any sum greater than that paid for such plants as may prove untrue. If the purchaser does not accept the goods on these terms, they are to be returned at once.

VISIT OUR NURSERY—Notify us and we will meet you at local terminals and assist you in making reservations.

"SERVICE" KEYNOTE OF MONROVIA CUSTOMER POLICY

As a wholesale grower it's simply a matter of good business for Monrovia Nursery Co. to supply nurserymen only well grown, fast selling stock.

But we think, from both our viewpoint and the viewpoint of you as a retailer, that it's even better business for us to carry our obligation much farther. Our representatives keep informed of your local problems, analyze your territory, so that we can help you avoid buying stocks which won't thrive in your area.

We also give constant recognition to the fact that an overstocked nursery can't show a reasonable profit, nor can the wholesaler move merchandise if the retailer isn't selling his stock.

That is why you may one day have our representative advise you against placing an order for stock which experience has taught him isn't suitable for your locality. It's one of the many services Monrovia Nursery Co. renders the nurserymen. For we are deeply interested in your success. Please feel free to call on us for help with your sales problems, merchandising plans and other promotional suggestions.

If you are an old customer you will note that we have added several new varieties to our growing lines so that we may serve you even better. If you are ordering from Monrovia Nursery for the first time you can be assured that years of skillful propagation and the most efficient methods of handling bring you nursery stock that is second to none in quality.

Yours for continued success,
H. E. ROSEDALE

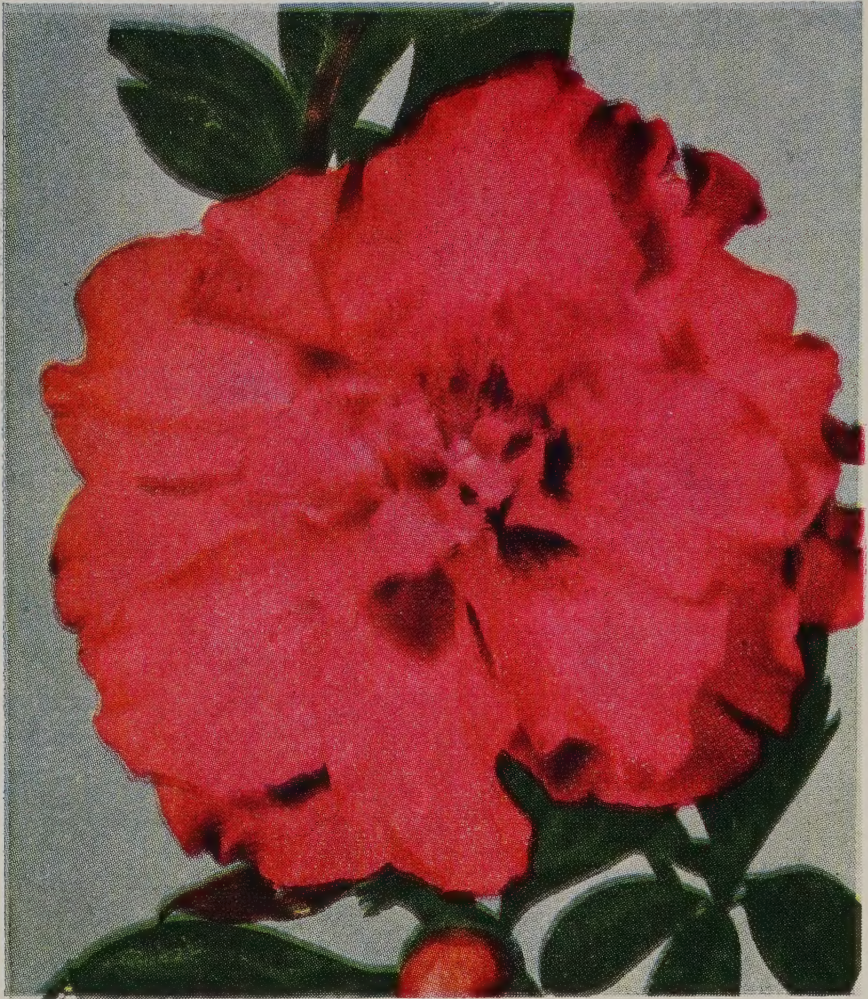
This List Cancels All Previous Issues

Prices Subject to Change Without Notice

File for Reference

July 1, 1947

PRICES SUBJECT TO CHANGE WITHOUT NOTICE



INDICA AZALEA TRIUMPH

AZALEAS

Undoubtedly one of the best money makers you have in your nursery is the Belgium Indica type of azaleas. These beautiful plants can be sold as pot plants as well as ornamentals, and they can be forced to bloom during the holidays.

We are one of the largest growers of azaleas in the southwest. You are welcome to visit our large azalea house and growing grounds.

Avenir. Very bushy azalea producing a great profusion of salmon-pink flowers. Double. Early.

8-in. pot.....\$2.25

Eclaireur. Red.

2-in. pot.....\$.20

5-in. pot.....\$1.00

Please do not order less than the following quantities of any one variety.

- 25 in 2" lining out stock.
- 10 in 1-gallon containers.
- 5 in 5-gallon or Field Stock.

BEFORE ORDERING READ PAGE 1 CAREFULLY

Glory de Loochristy. Very double light orange flowers with light green foliage.

4-in. pot.....\$.75

Mad. van der Cruyssen. Large three-inch cherry-red flowers with crimson dots. Late bloomer. Excellent for Easter.

2-in. pot.....\$.15 3-in. pot.....\$.30

5-in. pot..... .75 7-in. pot..... 1.45

Mad. Petrick. Large cherry-red flowers.

8-in. pot.....\$2.25

Niobe. Pure white. Best foliage.

2-in. pot.....\$.17½ 3-in. pot.....\$.30

5-in. pot..... .85 7-in. pot..... 1.65

Paul Schame. The best double salmon azalea. Blooms freely over a long season. In great demand.

2-in. pot.....\$.15 3-in. pot.....\$.30

5-in. pot..... .75 7-in. pot..... 1.45



INDICA AZALEA PINK PEARL

PRICES SUBJECT TO CHANGE WITHOUT NOTICE



INDICA AZALEA PAUL SCHAME

Perle de Noise. Pink and white variegated with medium size flowers. Dark green foliage.

4-in. pot.....\$.85

Pink Pearl. The finest double pink azalea. Heavy bloomer and fast seller. Flowers are good size in a light delicate pink.

2-in. pot.....\$.17½ 3-in. pot.....\$.35

5-in. pot..... .85 7-in. pot..... 1.65

Simon Mardner. Lovely double rose red with lilac overtone. Bushy, yet spreading type of growth. Very long season.

2-in. pot.....\$.15 3-in. pot.....\$.30

Temperance. Very interesting light lavender mauve. Semi-double flowers.

2-in. pot.....\$.15 3-in. pot.....\$.30

5-in. pot..... .75 7-in. pot..... 1.45

BEFORE ORDERING READ PAGE 1 CAREFULLY



INDICA AZALEA VERVANEANA VARIEGATA

Triumph. Lovely double red with purple sheen. Young flowers deep and full like rose buds. Very fast grower and early bloomer. Will force for the Christmas trade. One of the very best.

2-in. pot.....\$.15	3-in. pot.....\$.30
5-in. pot..... .75	7-in. pot..... 1.45

Vervaeneana Variegated. This fine Belgium Indica is an old favorite and the best seller of all variegated azaleas. Lovely double salmon rose in a white background.

2-in. pot.....\$.15	3-in. pot.....\$.30
5-in. pot..... .75	7-in. pot..... 1.45

PRICES SUBJECT TO CHANGE WITHOUT NOTICE



CAMELLIA CHANDLERI ELEGANS

CAMELLIAS

Adrian Lebrun. See Sarah Frost.

Alba plena. White. Large formal double flowers with imbricated snow white petals. A medium bushy shrub with spreading branches and glossy green foliage. Rare and much sought after. Early.

7-gal. 2½-3 ft.....\$9.85

Alba superba. White. (John G. Drayton). Pure white, large semi-double informal flowers. Vigorous erect shrub with large deep green glossy leaves. Midseason.

1-gal.\$.95 5-gal.\$2.95

Auguste Delfosse. Red. Medium size deep red double peony type flowers. Habit vigorous and compact, erect. Leaves medium size. Midseason.

5-gal.\$2.95

Bella Romana. Pink and carmine. Light pink, profusely striped and splashed with carmine. Informal double flowers of good size, excellent for corsages. Bushy vigorous growth, large light green foliage.

1-gal.\$1.25 5-gal.\$3.50

7-gal. 3½-4 ft..... 4.85

BEFORE ORDERING READ PAGE 1 CAREFULLY

Monrovia, California

Caprice. White. Medium size creamy white, high centered double peony type flowers with prominent stamens. Vigorous erect growth with large dark green leaves. Midseason.

1-gal.\$.95 5-gal.\$2.95

Chandleri elegans. Variegated. Very large high centered peony type with large guard petals. Rose pink with irregular white variegations. Prolific flowering. This is one of the largest and most spectacular of all camellias. Slow growing, with a spreading bushy growth.

1-gal.\$1.50 5-gal.\$3.95

Cheerful. Cherry red. Medium size double cherry-red flowers. Free flowering compact shrub with fine foliage. One of the hardiest. Early.

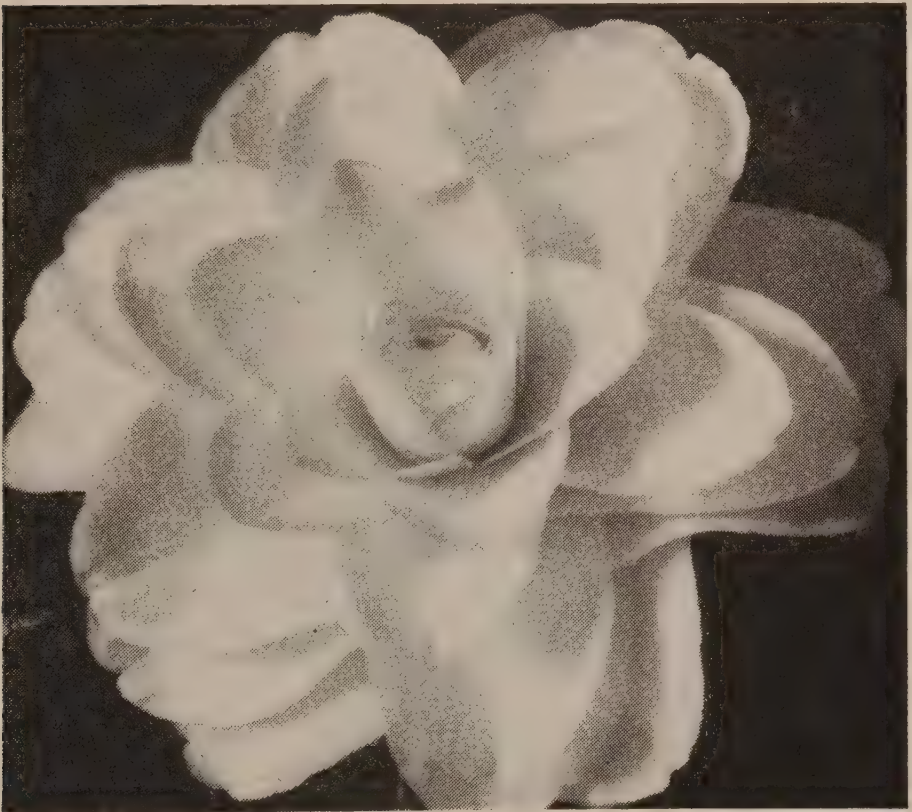
5-gal.\$2.50

Colonel Firey. Dark red. Very large formal double dark red flower with imbricated petals. One of the finest and most admired of red camellias. Slender growth with long, twisted narrow dark green leaves. Midseason to late.

1-gal.\$1.50 5-gal.\$3.95
 7-gal. (large) 6.95

Covina. Red. Medium size loosely double informal rose red flowers freely produced over a long period. Vigorous compact bushy plant well suited to landscape planting. Foliage excellent, dark green. Hardy. Will grow in sun, fine for pot or tub specimen. Midseason.

2-in. pot.....\$.25
 1-gal.75 5-gal.\$2.50



CAMELLIA PURITY

PRICES SUBJECT TO CHANGE WITHOUT NOTICE



CAMELLIA COLONEL FIREY

Daikagura. Variegated. Earliest. Large double peony type with cluster of small petals in center, deep rose pink with white splotches. Slow, compact upright growth and dull green foliage. One of the most popular of the variegated camellias.

5-gal.\$3.95

Duchess de Cases. Pink. Medium to large double peony flowers in a lovely light pink making a corsage flower of the finest type. Vigorous compact shrub with medium size foliage. Midseason.

5-gal.\$2.95

H. E. R. Collection. Mixed varieties only. Plants in this collection are all from fine types, no seedlings. You will find many excellent and choice varieties among these plants. Not labeled.

2-in. pot.....\$.20	3-in. pot.....\$.30
1-gal.65	5-gal. 1.95

Hermes. See Jordan's Pride.

Imperator. Red. Rich red peony type with small central petals making a graceful high center. Longest blooming season. Good seller.

2-in. pot.....\$.25	
1-gal.75	5-gal.\$2.50

BEFORE ORDERING READ PAGE 1 CAREFULLY

Monrovia, California

John Drayton. See Alba superba.

John Laing. Salmon rose. Medium size compact double flowers. formal, soft salmon rose. Similar to Pink Perfection but larger. An excellent corsage flower. Vigorous, much branched shrub with small foliage. Midseason.

5-gal.\$2.50

Jordan's Pride (Hermes). Variegated pink. Our improved strain is nearly 100% double flowers in light pink with irregular white margin and streaked with deep pink Profuse blooming, even while young. One of the few fragrant camellias. Midseason.

1-gal.\$.95 5-gal.\$2.95

Julia Drayton (Mathotiana rubra). Red. One of the largest and most spectacular red camellias. Brilliant scarlet symmetrical double flowers with large textured and veined petals. A handsome shrub of vigorous compact growth with dark green leaves. Midseason to late.

5-gal.\$3.95

Kumasaka (Lady Marian). Rose pink. Very large informal double to peony type in rose pink with deeper veins. Free flowering, even while young. Excellent for cutting. Habit erect, vigorous with long twisting leaves. Midseason to late.

5-gal.\$3.95

Mathotiana rubra. See Julia Drayton.



CAMELLIA KUMASAKA

PRICES SUBJECT TO CHANGE WITHOUT NOTICE



CAMELLIA, POPE PIUS IX

Panache. Variegated. Large slightly flattened flower semi-double to formal in a blend of ivory white and pink. Vigorous bushy growth. Hardy. Recommended as one of the finest for foliage. Late.

1-gal.\$.75 5-gal.\$2.50

Pink Perfection. Pink. Medium size formal double flowers of soft shell pink. Petals imbricated. A long season bloomer. One of the most popular of all camellias. Vigorous shrub with erect growth and rounded, glossy leaves.

2-in. pot.....\$.25

1-gal.75 5-gal.\$2.50

Pope Pius IX. Red. (Prince Eugene Napoleon; Mrs. Harry Davis). Large formal double red flowers with imbricated petals. Upright open growth with medium size dark green foliage. One of the finest reds. Midseason.

1-gal.\$1.50

5-gal.\$3.95

5-gal. (large) 4.95

7-gal. 6.95

Prof. C. S. Sargent. Dark red. Medium size dark red fully double peony type flower with ball of incurved petals edged with a frill of broader petals. Vigorous, bushy and upright. Hardy and free blooming. Very popular variety. Early to midseason.

7-gal.\$6.95

Purity (Neige d'Or). White. This strain is a perfect formal type. Pure white symmetrical double. Large. Some petals pointed, others rounded. Vigorous erect, open growth with medium size foliage. Popular and fine bloomer. Late.

1-gal.\$.95

5-gal.\$2.95

BEFORE ORDERING READ PAGE 1 CAREFULLY



CAMELLIA ROSEDALE'S BEAUTY
(Trade Mark Reg.)

Rosedale Beauty (Trade mark reg.). Red. Large fully double flowers of rich glowing pink sometimes showing a few golden stamens. Petals pointed at first, becoming well rounded. Not tight and dense but gracefully composed. A real delight and free flowering.

2-in. pot.....\$.25
1-gal.95 5-gal.\$2.95

Rouge. Rose. Large, many petaled flowers completely concealing the stamens. Inner petals light rose, outer deep cerise.

2-in. pot.....\$.25
1-gal.75 5-gal.\$2.50

Sarah Frost (Clark's Red; Adrian Lebrun). Medium formal double flowers of crimson to deep rose with imbricated petals. Vigorous compact and bushy rounded dull green leaves. Hardy and satisfactory. Midseason to late.

2-in. pot.....\$.25
1-gal.75 5-gal.\$1.95

Tricolor. Variegated. (Annie Laurie; Crichton). White striped with pink. Medium size semi-double flowers. Compact, upright growth with medium size foliage. Late flowering.

5-gal.\$1.95



ABELIA EDWARD GAUCHER

GENERAL LIST

ABELIA Edward Gaucher. Pink Abelia

One of the most useful shrubs of recent introduction. Hardy. Shiny deep green foliage always refined and attractive. Flowers all summer. Clear rich pink. Sells the year around.

2-in. pot.....	\$.15		
1-gal.40	5-gal.	\$1.60
		Field Grown 2-3'....	1.85

Abelia grandiflora. White Abelia

Medium size very hardy shrub with gracefully arching branches clothed in deep green shiny small leaves; new growth reddish. Flowers white with red bracts. Blooms all summer. Always in demand.

2-in. pot.....	.12		
1-gal.	\$.35	5-gal.	\$1.45
		Field Grown 2-3'....	1.75

ABUTILON (Vitifolium Vesuvius). Flowering Maple

Quick growing shrubs with soft green foliage like Maple and freely producing pendant brightly colored flowers resembling Chinese garden lanterns.

Abutilon Red Monarch

Best new deep red. Large flowers.

2-in. pot.....	\$.12		
1-gal.30	5-gal.	\$1.25

Abutilon speciosa

Brilliant orange colored flowers. Heavy and consistent bloomer.

2-in. pot.....	\$.12		
1-gal.30	5-gal.	\$1.25

Abutilon yellow

Finest yellow flowered selection available.

2-in. pot.....	\$.12		
1-gal.30	5-gal.	\$1.25

BEFORE ORDERING READ PAGE 1 CAREFULLY

Monrovia, California

ACACIA baileyana

The best acacia for street planting, lawns, for shade, etc. Will not lift the soil or heave pavements. Medium size tree with round head of blue-green fern-like foliage and showy masses of fluffy yellow flowers in late winter and spring.

2-in. pot.....\$.10
 1-gal.35 5-gal.\$1.65

Acacia dealbata. Silver Wattle

Hardy tree, bluish-green fern-like foliage and golden yellow flowers in winter.

2-in. pot.....\$.10
 1-gal.35 5-gal.\$1.65

Acacia floribunda. Everblooming Acacia

Very popular small round headed tree. Foliage a good green, clean and neat; flowers bright yellow, fluffy appearing most of the year.

2-in. pot.....\$.10
 1-gal.35 5-gal.\$1.65

Acacia latifolia. Bush Acacia

Low growing tree or large bush with long broad leaves and bright yellow fluffy flowers in spring. Much used as a background shrub or wind break, which with pruning makes a tight mass of leaves.

2-in. pot.....\$.10
 1-gal.30 5-gal.\$1.45

Acacia melanoxylon. Black Acacia

Hardy tree producing a dense head of foliage; leaves deep green and brightened in spring with myriads of creamy-yellow flowers. Much used for street planting.

2-in. pot.....\$.10
 1-gal.35 5-gal.\$1.65

Acacia podalyriaefolia. Pearl Acacia

Beautiful small tree with roundish oval silver-gray leaves and rich yellow flowers in long clusters.

2-in. pot.....\$.10
 1-gal.35 5-gal.\$1.65

AGAPANTHUS umbellatus (Albumon). Blue Lily of the Nile

Hardy perennial, makes dense masses of long dark green amaryllis-like leaves and stems 1 to 2 ft. long bearing umbels of lovely blue flowers in summer. Hardy. Used as cut flowers.

2-in. pot.....\$.10
 1-gal.30

AMPELOPSIS quinquefolia (Vitacea). Virginia Creeper

Deciduous vine much used to cover walls, fences, etc. Leaves of 5 long finger-like leaflets. Assumes brilliant color in fall. Very hardy.

2-in. pot.....\$.10
 1-gal.40

Ampelopsis veitchi (Tricuspidata). Boston Ivy

Deciduous close clinging vine especially suited to cover masonry walls. Pointed leaves make desirable pattern. glossy deep green turning bright colors in fall. Very hardy.

2-in. pot.....\$.10
 1-gal.40 5-gal.\$1.65

AMYGDALUS alba nana (Prunus glandulosa). Dwarf.

White Flowering Almond

Deciduous shrub 3 to 5 feet high deserving a prominent place in the planting because in spring before the leaves appear it is a mass of dainty pure white flowers. Very hardy.

2-in. pot.....\$.12
 1-gal.35 5-gal.\$1.45

PRICES SUBJECT TO CHANGE WITHOUT NOTICE

Amygdalus rosea nana (*Prunus glandulosa*). Dwf.
Pink Flowering Almond

This is a heavy seller during March. Containers showing the plants in bloom never fail to attract attention. Like the White Almond but flowers dainty pink, fully double and set closely on the stems.

2-in. pot.....\$.12
1-gal.35 5-gal.\$1.45

ANTIGNON leptopus. *Rosea de Montana*, Queen Wreath, Coral Vine

Rapid climbing vine especially adapted to the warmer sections because it makes quick growth and shade and blooms freely. May freeze to ground but makes quick recovery. Flowers bright pink.

1-gal.\$.50

ARALIA papyrifera (*Fatsia*). Rice Paper Plant

For tropical effects this shrub is ideal. Makes growth to 10 or 15 feet with large gray-green lush looking leaves and in spring long plumes of creamy white flowers.

2-in. pot.....\$.12
1-gal.35 5-gal.\$1.50

Aralia sieboldi. Glossy leaved Rice Paper Plant

Dwarf growing evergreen shrub. Foliage deep green and glossy. Makes an excellent plant for patio planting in open ground or pots. Prefers some shade.

2-in. pot.....\$.12
1-gal.35 5-gal.\$1.45

ARBORVITAE. See *Thuja*



ORCHID TREE, BAUHINIA PURPUREA

BEFORE ORDERING READ PAGE 1 CAREFULLY



ARBUTUS UNEDO—STRAWBERRY BUSH

ARBUTUS unedo. Bush Strawberry

Hardy evergreen shrub growing 8 to 10 feet with deep green leaves and brilliant bright red fruits in winter similar to strawberries which often appear at the same time as the creamy white bell shaped flowers. Sells best in spring and fall.

2-in. pot.....	\$.10	
1-gal.35	5-gal.\$1.45

ASPARAGUS plumosus. Fern Asparagus

Small vine with dainty fern-like plumes of foliage. Much used as a bouquet filler and ideal for shady spots in patios or in the open ground.

2-in. pot.....	\$.12
1-gal.35

Asparagus sprengeri

Leaves about $\frac{3}{4}$ of an inch long on long arching branches making a fluffy mound of green foliage. Beautiful in hanging baskets.

2-in. pot.....	\$.12
----------------	--------

AZALEAS. Indica hybrids

We are offering the following varieties in gallon containers: Van der Cruyssen, Triumph and Paul Schame. See description on page 4.

1-gal.	\$.50
-------------	--------

PRICES SUBJECT TO CHANGE WITHOUT NOTICE



BELOPERONE, SHRIMP PLANT

BAUHINIA purpurea. Orchid Tree.

Showy small tree for warmer regions. Makes a beautiful specimen tree. In the spring the tree is a mass of 2-inch orchid colored flowers for several weeks. Plant in full sun.

2-in. pot.....\$.15
 1-gal.40 5-gal.\$1.65

BELOPERONE comosa

Somewhat bushier and with lighter foliage than tomentosa. Flower bracts broader, burnt orange in color making the flowers appear larger.

5-gal.\$1.25

Beloperone tomentosa. Shrimp Plant, False Hops, Coral Plant.

Dwarf everblooming evergreen shrub making a mass of shrimp-like flowers consisting of terra cotta colored scales overlapping to appear like a shrimp. The flowers peek out from under, and are white with purple spots. Sun or light shade.

2-in. pot.....\$.12
 1-gal.30 5-gal.\$1.25

BERBERIS darwini. Darwin's Barberry

One of the best low shrubs with masses of small holly-shaped leaves in dark glossy green. Large clusters of bright orange flowers followed by grape-like blue berries in fall.

1-gal.\$.45

BIGNONIA chamberlayni (Anemopaegma)

Yellow Trumpet Vine

Strong growing evergreen vine with clusters of showy yellow-orange trumpet shaped flowers. An ideal cover for fences, etc., where it is desirable to get a quick cover. Self supporting.

2-in. pot.....\$.15
 1-gal.40 5-gal.\$1.65

Bignonia cherere (Phaedranthus) Scarlet Trumpet Vine

Strong growing vine, will stand slight frosts. Makes a heavy, verdant cover and large sprays of huge trumpets 4 to

BEFORE ORDERING READ PAGE 1 CAREFULLY

Monrovia, California

5 inches long and 2 inches wide. Bright red with a yellow tube. The cuttings for these are taken from the best large leaf type. Do not confuse this one with those commonly offered.

2-in. pot.....\$.15
 1-gal.45 5-gal.\$1.75

Bignonia tweediana (Doxantha). Catclaw Yellow Trumpet
 Hardy deciduous vine with slender shoots that cling to any surface. Flowers bright yellow trumpets 3 inches long and 4 inches across.

2-in. pot.....\$.10
 1-gal.35 5-gal.\$1.65

Bignonia violacea. Lavender Trumpet Vine
 Free flowering and delightful vine for sun or shade. Not rank in growth and lovely in spring and summer when covered with light lavender gloxinia-like flowers. Leathery thick leaves.

2-in. pot.....\$.15
 1-gal.40 5-gal.\$1.65

BLUE LAWSON. See Chamaecyparis

BOUGAINVILLEA America
 Large flowering scarlet red bougainvillea. Fast growing.

1-gal.\$.75 5-gal.\$2.25

Bougainvillea Barbara Karst
 The best profusely blooming bushy bougainvillea. Has a remarkable root system. Flowers large, red in good sized clusters. Plants bloom at an early age and make quite a show in your salesyard. Will stand more frost than other varieties.

2-in. pot.....\$.25
 1-gal.\$.75 5-gal.\$2.25



BIGNONIA VIOLACEA

PRICES SUBJECT TO CHANGE WITHOUT NOTICE



BRUNFELSIA, YESTERDAY AND TODAY

Bougainvillea braziliensis

The hardy type. Easy to grow in sunny places. Flowers are reddish-purple.

5-gal.\$2.25

Bougainvillea Crimson Lake

The popular deep red variety. Difficult to transplant.

1-gal.\$.75 5-gal.\$2.25

Bougainvillea Mission Hill. See America

Bougainvillea Panama Queen

Large growing rampant vine producing glorious sprays of light pink flowers. A most remarkable color and quite different from the standard varieties. Blooms sparsely, quite tender.

5-gal.\$2.25

BOUARDIA Albatross

The finest white flowering bouvardia. Flower tubes very long, about 4 inches, and petals much larger and wide spreading. Sweetly fragrant. Low shrub growing 3 to 4 feet.

1-gal.\$.50 5-gal.\$1.85

BRUNFELSIA floribunda. Yesterday and Today

A very fine shrub for specimen planting for spring bloom. Has attractive foliage and flowers are sweetly scented. Open deep violet and fade to light violet or white. Sun or shade.

1-gal.\$.60 5-gal.\$1.95

BUDDLEIA hartwegi. Butterfly Bush

Fast growing medium to tall shrub producing long tapering spikes of fragrant lilac like and lilac colored flowers. The foliage is dull olive green. Hardy.

2-in. pot.....\$.10
1-gal.\$.30 5-gal.\$1.25

BEFORE ORDERING READ PAGE 1 CAREFULLY

Monrovia, California

BUXUS japonica. Boxwood

Because of its close growing habit, small leaves of good color and the fact that it withstands shearing better than most plants, Boxwood has become the finest shrub for use in hedges, topiary (globes, pyramids, etc.) and specimen planting.

1-gal.	\$.25		
Field Grown BB—Globe 12-15".....		\$2.00	
Field Grown BB—Pyramid 15-18".....		2.00	

CALLISTEMON rigidus. Bottlebrush

Hardy variety suited to more exposed positions. Sun, withstands wind quite well. Stiff, narrow foliage with bright red flowers in spring.

2-in. pot.....	\$.10		
1-gal.30	5-gal.	\$1.45

Callistemon viminalis. Scarlet Bottlebrush

Tall slender shrub with slender semi-weeping branches. Cascades of bright scarlet bottlebrush blooms. Grows in sun.

2-in. pot.....	\$.10		
1-gal.35	5-gal.	\$1.45

CAMELLIAS. See page 8.

CAMPHORA officinalis (Cinnomonum camphora)

Camphor Tree

The standard street tree in many communities. Uniform light green foliage becomes colorful with the bronzy red new growth. Dark grey to black trunk and branches very attractive.

2-in. pot.....	\$.12		
1-gal.35	5-gal.	\$1.65

CARISSA grandiflora. Natal Plum

Exceptionally fine ornamental shrub of medium height and dense dark green shiny foliage. Fragrant pure white five-pointed flowers, and if planted in groups plum-like bright red fruits of value in making jellies.

2-in. pot.....	\$.12		
1-gal.35	5-gal.	\$1.65

Carissa grandiflora postrata. Prostrate Natal Plum

Low spreading shrub. Good for banks and ground covering. Like the above in every respect except in the habit of growth. Excellent foliage shrub.

2-in. pot.....	\$.15		
1-gal.40	5-gal.	\$1.65

CAROB. See Ceratonia

CASSIA artemisioides. Feathery Cassia

A grand little shrub for dry sunny places where the rounded form of feathery silvery grey foliage and bright yellow fragrant flowers show to advantage. Will stand dry, almost desert conditions, with little water, and is equally useful in the coastal areas as well.

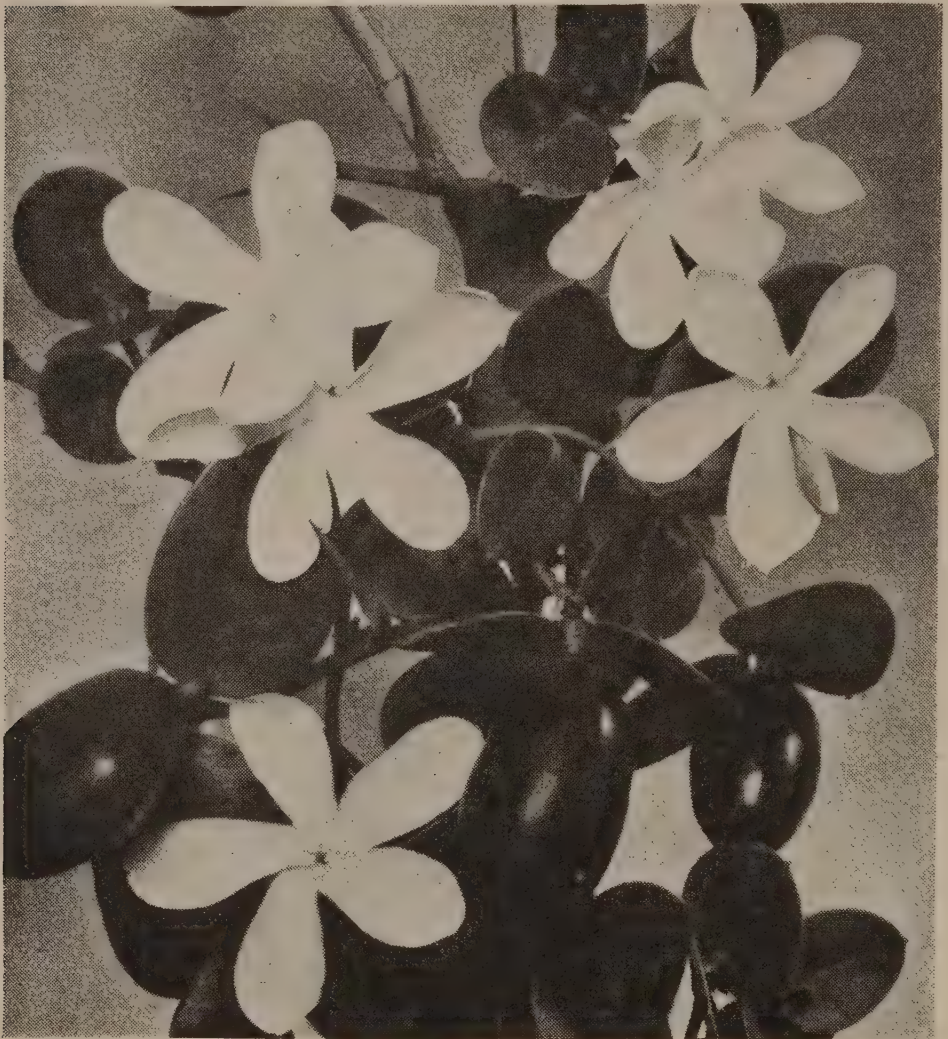
2-in. pot.....	\$.15		
1-gal.40	5-gal.	\$1.65

CEDRUS deodara. Deodar Cedar, Deodar, California Christmas Tree

One of the finest large conifers for the southwest. Makes a tall spreading pyramid of fine silvery grey foliage. It has a long useful life as a small specimen. Sun.

2-in. pot.....	\$.17½		
1-gal.50		
Field Grown BB 2' 1.75.....	3'.....	\$2.25	4'.....\$3.25

PRICES SUBJECT TO CHANGE WITHOUT NOTICE



CARISSA GRANDIFLORA, NATAL PLUM (See page 21)

CERATONIA siliqua. Carob, St. John's Bread Tree

An excellent long lived deep rooted tree of medium size. The round head of deep green foliage is always attractive. Makes dense shade; never becomes large. A fine street tree.

2-in. pot.....\$.15
 1-gal.40 5-gal.\$1.75

CERATOSTIGMA griffithi. Burmese Plumbago

Low growing shrub with bronzy foliage. Maximum height 2 ft. Covered in autumn with many bright blue flowers.

2-in. pot.....\$.15
 1-gal.35 5-gal.\$1.45

Ceratostigma larpentae. Dwarf Blue Plumbago

Low shrub or woody perennial making a creeping growth not over 6 or 8 inches. For semi-shade or sun where it covers itself with brilliant rich blue flowers in fall or late summer. Hardy.

2-in. pot.....\$.15
 1-gal.35 5-gal.\$1.35

CESTRUM elegans. Red Cestrum

Medium to large shrub in many ways resembling a large fuchsia with excellent soft green foliage and clusters of red tubular flowers. Large red berries. Sun or partial shade.

2-in. pot.....\$.12
 1-gal.35

Cestrum parqui (Nocturnum). Night Scented Jasmine

By day just an ordinary dense growing shrub with pleasant light green foliage and insignificant light yellow tubular flowers but by night one of the most strikingly fragrant shrubs grown in this region.

2-in. pot.....\$.10 1-gal.30

BEFORE ORDERING READ PAGE 1 CAREFULLY

CHAMAECYPARIS lawsoniana alumi. Blue Lawson Cypress

This is by far the most popular and universally useful of all the varieties of Lawson Cypress. Makes a formal pyramid of metallic blue-green foliage, closely set and fairly slow in growth. Good for specimen planting anywhere except actual desert areas.

2-in. pot.....	\$.15		
1-gal.40	5-gal.	\$1.65
Field Grown BB 18-24".....	\$1.75	24-30".....	2.50

Chamaecyparis lawsoniana stewarti. Golden Lawson Cypress

Another reliable conifer for specimen planting. New growth rich golden yellow.

2-in pot.....	\$.17½		
1-gal.50	5-gal.	\$1.75
Field grown	BB.....	18-24"	2.00
24-30"	2.50	30-36"	3.00

CHAMAELAUCIUM ciliatum. Geraldton Wax Flower

Medium to large shrub with graceful arching branches covered with heather-like foliage and showy sprays of waxy white to rose colored flowers. Long lasting as a cut flower.

1-gal.	\$.50	5-gal.	\$1.75
-------------	--------	-------------	--------

CHOISYA ternata. Mexican Mock Orange

A very fine hardy shrub with glossy green leaves of three leaflets each, and fragrant white flowers in a showy cluster. Specimens densely globular. Sun or shade.

1-gal.	\$.45	5-gal.	\$1.75
Field grown	BB.....	18-24"	2.00



GERALDTON WAXFLOWER

PRICES SUBJECT TO CHANGE WITHOUT NOTICE

CHORIZEMA illicifolium. Flame Pea Shrub

Low spreading shrub with small deep green holly-like leaves and bright orange-red pea shaped flowers. A very colorful dwarf spring flowering plant.

2-in. pot.....\$.15 1-gal.35

Chorizema varium. Flame Pea Shrub

Low growing dense shrub with dark green smooth edged leaves and showy sprays of pea shaped flowers in winter and spring. Flowers are bright orange-red and reddish purple. Sun.

2-in. pot.....\$.12 1-gal.35

CISSUS hypoglauca

Fast growing evergreen vine. Glossy leaves of 3 leaflets 4 inches long. Sharp-toothed.

2-in. pot.....\$.15
 1-gal.40 5-gal.\$1.65

Cissus rhombifolia (Vitus). Evergreen Grape

For a foliage vine this is hard to beat. Glossy rich green leaves of 3 leaflets set close along the twining stems. Used often as a pot plant for indoor decoration or outdoors in either sun or shade. Easy to grow.

2-in. pot.....\$.15
 1-gal.40 5-gal.\$1.65

CISTUS landaniferus maculatus. Brown Eyed Rockrose

Low spreading shrub with deep green narrow foliage and covered with large white flowers. Each petal shows a prominent deep brown spot at the base. For dry soil and sun.

2-in. pot.....\$.15
 1-gal.40 5-gal.\$1.50

CITRUS calamondin. Philippine Lime

Dwarf shrub with light green small leaves, fragrant white flowers followed by round orange red fruits 1½ inch in diameter. Makes an excellent marmalade. Most resistant to cold of any citrus.

1-gal.\$.50 5-gal.\$1.95

Citrus Meyer Lemon. Chinese Dwarf Lemon

Perhaps the finest ornamental shrub of the citrus family. Makes a rounded medium size shrub with excellent foliage and fragrant lavender to white flowers. Produces lemons of table quality almost the year around. Hardy.

2-in. pot.....\$.15
 1-gal.45 5-gal.\$1.75
 Espalier form 3.45

Citrus otaheite orange

Very dwarf ornamental orange. Showy and fruit in sufficient quantity to make a splendid specimen or pot plant.

1-gal.\$.45

CLERODENDRUM foetidum. Kashmir Bouquet

Dwarf spreading shrub with fairly large deep green toothed leaves and fragrant clusters of rose red flowers 4 to 8 inches across in ball shaped heads.

1-gal.\$.50 5-gal.\$1.75

Monrovia, California

CLETHRA arborea. Lily of the Valley Bush

Large evergreen shrub for partial shade. Leaves large, 4 inches long and deep green and leathery. Flowers in long panicles, each resembling Lily of the Valley, white. Hardy.

1-gal.\$.50 5-gal.\$1.95

COCOS plumosa (Arecastrum). Queen Palm, Cocos Palm

Graceful, dependable palm for street planting and specimens for lawns. Smooth slender trunk and long arching feathery pinnate leaves.

1-gal.\$.50

CONVOLVULUS mauritanicus

Trailing perennial making compact mounds of grey green foliage and covered from spring to fall with inch-wide lavender blue flowers. For rockeries, hanging baskets, porch boxes, or the perennial border. Sun.

2-in. pot.....\$.10 1-gal.30

COPROSMA baueri. Mirror Plant, Looking Glass Plant

A medium size shrub planted mostly for the extremely glossy deep green foliage. Adaptable to all but the coldest areas.

2-in. pot.....\$.10 Flats\$3.00

1-gal.25 5-gal. 1.45

Coprosma baueri variegata

Leaves glossy with golden variegations. Medium sized shrub.

5-gal.\$1.45

Coprosma microphylla

Hardy evergreen shrub. Useful as a ground cover. Dense spreading habit close to ground. Small deep green leaves. Sun or partial shade.

1-gal.\$.35

CORREA harrisi. Red Australian Fuchsia

Small leaved shrub, prostrate but mounding up to about 2 feet. Leaves small grey-green. Flowers longer than Correa pulchella and bright red. Sun and well drained soil.

1-gal.\$.60



MEYER LEMON

PRICES SUBJECT TO CHANGE WITHOUT NOTICE



CORREA PULCHELLA

Correa pulchella. Australian Fuchsia

Compact shrub growing to a height of 2½ feet but spreading considerably more with small grey-green leaves and wide flaring pink flowers resembling small bells. Plant in sun in a well drained soil.

2-in. pot.....	\$.15		
1-gal.45	5-gal.	\$1.65

COTONEASTER horizontalis (Davidiana) Rock Spray, Rock Cotoneaster

Low spreading shrub with arching stems lined with small round leaves. White flowers in spring are followed by bright red berries in fall and winter. In fall the leaves turn bright red. For the rock garden or as a bank cover in dry, sunny places.

2-in. pot.....	\$.12		
1-gal.35	5-gal.	\$1.45

Cotoneaster pannosa. Silverleaf Cotoneaster

Medium size shrub with small silvery-grey leaves with lighter undersides. White flowers followed by bright red berries in fall and winter. Grows well anywhere from coast to desert areas.

2-in. pot.....	\$.10		
1-gal.30	5-gal.	\$1.45

Cotoneaster parneyi (Lactea). Parneyi Cotoneaster

Large growing shrub with luxuriant deep green foliage the year around. Brilliant-red berries. Most popular cotoneaster and one of the finest shrubs for landscape planting.

2-in. pot.....	\$.08	Flats	\$3.00
1-gal.25	5-gal.	1.45

BEFORE ORDERING READ PAGE 1 CAREFULLY

Monrovia, California

CROTALARIA agatiflora. Canarybird Bush

Large shrub, foliage light green and long arching branches lined with chartreuse green and yellow flowers which resemble very closely "Canary Birds". Sun.

2-in. pot.....	\$.17½		
1-gal.45	5-gal.	\$1.65

CUPHEA hyssopifolia

One of the finest very low growing shrubs suitable for edging walks, flowerbeds or in foundation planting. Deep green foliage mounds covered most of the year with little pink flowers.

2-in. pot.....	\$.12
1-gal.30

Cuphea ignea. Cigar Plant

Low bushy shrub with deep green foliage and inch-long red flowers with yellow tips resembling cigars. Sun or light shade.

2-in. pot.....	\$.12
1-gal.30



CROTALARIA AGATIFLORA, CANARY BIRD BUSH

PRICES SUBJECT TO CHANGE WITHOUT NOTICE

MONROVIA NURSERY COMPANY

CUPRESSUS arizonica. Arizona Cypress

Tall narrow pyramidal conifer with bluish-green foliage. Does well on the desert and also along the coast.

	Flats	\$2.50
1-gal.	\$.30	5-gal. 1.45

Cupressus forbesi. Forbes Cypress, Tecate Cypress

Dark green foliage superior to Monterey Cypress and is replacing this species for hedges, etc., because of its immunity to the cypress fungus. Tall.

	Flats	\$2.50
1-gal.	\$.30	5-gal. 1.45

Cupressus macrocarpa. Monterey Cypress

Tall wide spreading pyramidal tree. Much used for clipped hedges. Stands shearing and exposure to both wind and heat. Rapid growing. Subject to blight.

	Flats	\$2.50
1-gal.	\$.30	5-gal. 1.45

Cupressus sempervirens glauca. Blue Italian Cypress

This is the best Italian Cypress. Makes narrow dense pyramid of dark bluish-green foliage. Cutting grown from especially choice specimens to insure true type. This one is so superior that we do not offer other types.

1-gal.	\$.50	5-gal. \$1.85
-------------	--------	--------------------

CYDONIA japonica rosea nana (Chaenomeles)

Pink Flowering Quince

Deciduous shrub, extremely hardy and desirable for the showy pink single flowers early in spring. Needs no special culture, grows dwarf and bushy.

2-in. pot.....	\$.15	
1-gal.35	5-gal. \$1.45

Cydonia japonica rubra (Chaenomeles)

Scarlet Flowering Quince

Deciduous flowering shrub. Brilliant red flowers in early spring. Medium size.

2-in. pot.....	\$.15	
1-gal.35	5-gal. \$1.45

DIOSMA pulchrum (Coleonema). Pink Breath of Heaven

Compact 2½ to 3 ft. rounded shrub with heather-like light green foliage covered in late winter and early spring with quantities of tiny star-shaped pink flowers. Full sun. Hardy.

2-in. pot.....	\$.15	
1-gal.35	5-gal. \$1.45

Diosma reevesi. White Breath of Heaven

Like the Pink Breath of Heaven with dark green foliage and star-shaped white flowers in spring. Sun. Not quite as hardy as the Pink Diosma.

2-in. pot.....	\$.15	
1-gal.40	5-gal. \$1.60

Dracaena indivisa. Dracaena Palm

Small tree of lily family with leaves like yucca, long narrow sword-shaped and plumes of creamy white flowers when blooming. Used for desert or tropical effects. Sun.

2-in. pot.....	\$.12	Flats	\$3.00
1-gal.35		

Duranta stenostachya. Brazil Skyflower

Medium to large shrub with arching branches covered with an attractive light green glossy foliage and racemes of light blue flowers all summer. Sun or partial shade.

2-in. pot.....	\$.12	
1-gal.35	5-gal. \$1.45

BEFORE ORDERING READ PAGE 1 CAREFULLY

Monrovia, California

ERICA hieliana (E. Hyemalis). French Heather

One of the showiest flowering evergreen shrubs for late winter and spring. Heath-like dark green foliage and spikes of bright coral red flowers each about an inch long. Low growing.

2-in. pot.....\$.15
 1-gal.45 5-gal.\$1.65

Erica John McLaren. Pink Heather

Of the same type as hieliana but flowers a lovely shade of pink. Low compact shrub.

2-in. pot.....\$.15
 1-gal.45 5-gal.\$1.65

Erica melanthera rosea. Scotch Heather

Medium to tall evergreen shrub with fine billowy masses of tiny leaves and equally numerous rosy-pink flowers with black "eyes". Hardy. Plant in sun and well drained soil. Most popular heather.

2-in. pot.....\$.15
 1-gal.40 5-gal.\$1.65

Erica melanthera rubra. Red Heather

Same as above except for the deep rose red flowers. A very choice shrub.

2-in. pot.....\$.15
 1-gal.40 5-gal.\$1.65

Erica President Felix Faure. Pink French Heather

Very choice heather of the hieliana type with deep green foliage and long tubular flowers of clear pink. Low and compact.

2-in. pot.....\$.15
 1-gal.45 5-gal.\$1.65

ERIOBOTRYA japonica. Loquat

Small to medium size tree with large dark green leaves making dense shade and pear shaped yellow edible fruits. A good subject for espalier work.

2-in. pot.....\$.12
 1-gal.35 5-gal.\$1.45

ESCALLONIA montevidensis

Medium to large evergreen shrub with excellent light green foliage and masses of single white flowers in showy heads in summer. Very reliable shrub for landscape planting. Sun.

2-in. pot.....\$.15
 1-gal.35 5-gal.\$1.45

Escallonia organensis

Regarded as one of the best of this fine family of evergreen shrubs. Medium size, very bushy and well clothed with narrow bronzy green leaves and clusters of apple-blossom like flowers white and pink. Very free blooming.

2-in. pot.....\$.15
 1-gal.35 5-gal.\$1.45

Escallonia rubra. Red Escallonia

Medium to large evergreen shrub with deep green glossy foliage and clusters of bright red tubular flowers with spreading petals. Makes an excellent specimen plant. Prefers shade.

2-in. pot.....\$.15
 1-gal.40 5-gal.\$1.60

PRICES SUBJECT TO CHANGE WITHOUT NOTICE

EUCALYPTUS citriodora. Lemon Scented Gum

Tall strong growing tree with picturesque smooth trunks with peeling bark, long pointed lemon scented leaves and white flowers. Widely planted and characteristic of California landscapes.

2-in. pot.....\$.12
 1-gal.35 5-gal.\$1.60

Eucalyptus ficifolia. Scarlet Flowering Gum

Small to medium size tree, much used in street planting and as a specimen for the showy masses of bright red or coral red flowers. Leaves dark green, long pointed and leathery.

2-in. pot.....\$.15
 1-gal.40 5-gal.\$1.65

Eucalyptus globulus. Blue Gum

Tall growing tree much used for windbreaks, etc. New foliage is bright blue green; mature leaves deep green.

1-gal.\$.30

Eucalyptus globulus compacta. Bushy Blue Gum

Dwarf compact growing tree producing dense blue green masses of foliage. Used for background planting and for windbreaks.

1-gal.\$.30 Flats 3.00
 5-gal.\$1.25

Eucalyptus pulverulenta

Small tree with bluish foliage. Contrasts very well in any ornamental planting. Excellent for cutting and floral makeup.

2-in. pot.....\$.12 1-gal.40

Eucalyptus sideroxylon rosea

Medium size tree with brownish red rough bark and long pointed dark green leaves. Flowers in large clusters, pink. Profuse blooming.

2-in. pot.....\$.12
 1-gal.35 5-gal.\$1.60

EUGENIA myrtifolia (E. Paniculata Australis).

Brush Cherry

Close growing evergreen shrub or small tree much used in landscape planting for clipped hedges or as tall clipped pyramids for accent. Leaves dark bronzy green. new growth red; flowers fluffy white followed by red berries.

1-gal.\$.30 5-gal.\$1.65

Eugenia smithi (Acmena). Lili-pili Tree

Rapid growing large shrub with broader dark green leaves and showy clusters of lavender pink berries with a distinct porcelain texture. Very choice shrub.

2-in. pot.....\$.12 1-gal.35

EUONYMUS fortunei radicans. Trailing Euonymus

Trailing or climbing evergreen vine. Hardy. Small dark green leaves. Useful for covering walls or as a ground cover.

2-in. pot.....\$.12 1-gal.35

Euonymus japonicus. Green Euonymus

Medium size shrub with rounded glossy evergreen leaves. Will stand shearing well. Hardy.

2-in. pot.....\$.12
 1-gal.30 5-gal.\$1.45
 Field grown BB....15/18 in. 1.75
 18/24 in. 2.00 24/30 in. 2.50

Monrovia, California

Euonymus japonicus aureo-marginata. Golden Euonymus Dwarf compact growing evergreen shrub. Rounded leaves dark green with an irregular bright golden margin.

2-in. pot.....	\$.12		
1-gal.35	5-gal.	\$1.45
Field grown		15/18 in.	1.75
		18/24 in.	2.00

Euonymus japonicus aureo-variegata. Golden Variegated E. Leaves yellow in the center with a dark green margin. Medium sized shrub.

2-in. pot.....	\$.12		
1-gal.35	5-gal.	\$1.45
Field grown		15/18 in.	1.75

Euonymus Silver Queen

Foliage very attractive with rounded leaves of light green surrounded with a silver margin. Medium size.

2-in. pot.....	\$.12		
1-gal.35	5-gal.	\$1.45
Field grown		18/24 in.	1.75
		24/30 in.	2.00

EURYA emarginata (Ilex emarginata)

Beautiful close growing evergreen foliage plant resembling boxwood very much in the size of leaves but a dark green and thick in texture. Prefers some shade.

2-in. pot.....	\$.15		
1-gal.45	5-gal.	\$1.75

FATSHEDERA Lizei (Aralia). Botanical Wonder

A bigeneric Hybrid between Fatsia (Aralia) and Hedera. Semi-climbing and large glossy leaves similar to Hedera. Makes a good subject for espalier on walls in shade or partial shade.

2-in. pot.....	\$.15		
1-gal.40	5-gal.	\$1.45

FEIJOA Sellowiana (Pineapple guava)

Fast growing tall evergreen shrub with grey-green foliage and waxy white flowers with bright red central cluster of stamens. Fruits pale green, edible.

2-in. pot.....	\$.10	Flats	\$3.00
1-gal.30	5-gal.	1.45

FICUS repens. Creeping Fig

Close growing clinging evergreen vine. Leaves rounded, about 1 inch long. For sun or partial shade.

2-in. pot.....	\$.12	1-gal.35
----------------	--------	-------------	-----

Ficus retusa. India Laurel

Small tree or large shrub with thick glossy dark green foliage. Evergreen. One of the finest small trees for cultivation in the milder climates. Similar to Ficus Nitida.

2-in. pot.....	\$.15		
1-gal.40	5-gal.	\$1.75

FRAXINUS Uhdei. Shamel Ash.

Medium size slender evergreen tree excellent for street planting or as a shade tree because of its clean habit. Leaves long, glossy green. Introduced from Mexico.

2-in. pot.....	\$.15	1-gal.45
----------------	--------	-------------	-----

PRICES SUBJECT TO CHANGE WITHOUT NOTICE



"The Hill" where we grow our subtropical "tender" plants. Corner Canyon Boulevard and Grand Avenue, Monrovia.



Modern trucks make for safe deliveries (below).





*Our new efficient
"Canning
Machine"
for planting
1-gallon can stock.*



*Left: Headquarters and office,
Duarte Road at
Myrtle Ave., Monrovia.*

*Just a portion of
our Lining Out
Stock; all under
lath.*



GARDENIA Mystery. Mystery Gardenia

Five years ago we introduced this superior Gardenia to the trade. It has been difficult to supply the demand. This year our supply will be ample. Fine quality of large fragrant white flowers, medium size. Slightly acid soil, sun or part shade.

2-in. pot.....\$.17½		
1-gal.45	5-gal.	\$1.75

Gardenia veitchi. Everblooming Gardenia

Profuse blooming Gardenia with foliage and flowers smaller than that of Mystery, compact shrub. For sun or partial shade and acid soil.

2-in. pot.....\$.17½		
1-gal.45	5-gal.	\$1.75

GELSEMIUM sempervirens. Carolina Jessamine

Evergreen twining vine. Foliage luxuriant, light green. Flowers trumpet shaped, yellow and fragrant, making quite a show in late winter. Excellent ground cover.

2-in. pot.....\$.15		
1-gal.45	5-gal.	\$1.75

GENISTA fragrans (Cytisus). Canary Island Broom

Medium to large shrub with soft green foliage and masses of light yellow fragrant flowers in spring. Profuse blooming and does well in sun.

2-in. pot.....\$.12		
1-gal.35	5-gal.	\$1.45

GREVILLEA robusta. Silk Oak

Tall tree making a narrow columnar head of fern-like dark green leaves and candelabras of bright orange-yellow flowers in spring. This is the tree shown on Chinese pottery.

2-in. pot.....\$.10		
1-gal.35	5-gal.	\$1.60

Grevillea thelemanniana. Hummingbird Bush

Fine small to medium size shrub with fern-like small light green leaves, finely cut and dainty scarlet flowers. Difficult to transplant.

1-gal.40	5-gal.	\$1.60
-----------------	---------------	--------

GUAVAS (Fsidium)

(For Pineapple guava see Feijoa sellowiana)

Lemon Guava

Tall growing evergreen shrub making a fine screen plant or a tall hedge. Large bright yellow fruits make excellent jelly. Ripens in late summer.

2-in. pot.....\$.10	Flats	\$3.00
1-gal.30	5-gal.	1.45

Red Strawberry Guava

Medium size evergreen shrub bearing clusters of small round dark red fruits. Used in making jellies.

2-in. pot.....\$.10	Flats	\$3.00
1-gal.30	5-gal.	1.45

Monrovia, California

Yellow Strawberry Guava

About the same size as the red strawberry guava, perhaps slightly taller but fruits a rich deep yellow when ripe in late summer. Glossy light green, thick leaves.

2-in. pot.....\$.10	Flats\$3.00
1-gal.30	5-gal. 1.45

HEDERA canariensis. Algerian Ivy

New, large dark green leaves.

1-gal.\$0.40	5-gal.\$1.65
-------------------	-------------------

Hedera canariensis variegata. Variegated Ivy

1-gal.\$0.40	5-gal.\$1.65
-------------------	-------------------

Hedera helix. English Ivy

Small dark green leaves.

1-gal.\$0.40

HELIANTHEMUM ocymoides (Halimium) Yellow Sunrose

Low rounded evergreen shrub excellent for planting in sunny dry places where in the heat and full sun it produces bright little flowers for a very long time. Light green small leaves.

2-in. pot.....\$.15	
1-gal.40	5-gal.\$1.45

HIBBERTIA volubilis. Gold Guinea Vine

Dark green foliage, large yellow flowers.

5-gal.\$1.75



CAROLINA JESSAMINE, GELSEMIUM SEMPERVIRENS

PRICES SUBJECT TO CHANGE WITHOUT NOTICE



HIBISCUS, CROWN OF BOHEMIA

HIBISCUS

Abbey Wilder. Hardest to cold of all hibiscus. Single pink, vigorous grower.

2-in. pot.....\$.15	5-gal.\$1.25
1-gal.45	Standard 1.75

Agnes Gault. The enormous velvety shrimp-pink single flowers are the largest and showiest of all pink hibiscus. A vigorous growing free-blooming shrub—perhaps the most popular of all.

2-in. pot.....\$.15	5-gal.\$1.75
1-gal.45	Standard 2.75

Brilliant. Sometimes called San Diego Red, and ranking in popularity with Agnes Gault. The flowers are smaller, but a vivid crimson rare in flowers. One of the best.

2-in. pot.....\$.15	5-gal.\$1.75
1-gal.45	Standard 2.75

Buff. A lovely single type with flowers in a pleasing buff or apricot shade. The deep center has a faint crimson stain.

2-in. pot.....\$.15	5-gal.\$1.75
1-gal.45	Standard 2.75

California Gold. Large pure golden petals, deep carmine throat, single. Large foliage, vigorous.

5-gal.\$2.50

Chinese Red. Dainty single red, orange overcast.

2-in. pot.....\$.15	5-gal.\$1.75
1-gal.45	Standard 2.75

BEFORE ORDERING READ PAGE 1 CAREFULLY

Monrovia, California

- Chief.** Twice as large as single scarlet, same brilliant color.
5-gal.\$2.00
- Crown of Bohemia.** It combines all the colors of autumn in the large double flower—the rich golden base tones with blends of copper and orange.
5-gal.\$2.50
- Eleanor Gartley.** Large flaring copper-pink flowers, strong grower—heavy bloomer.
2-in. pot.....\$.15
1-gal.45 5-gal.\$1.75
- Fiery.** Very dark red single Hibiscus, excellent foliage.
2-in. pot.....\$.15
1-gal.45 5-gal.\$1.75
- Grace.** Single carmine overlaid with violet. Very striking and unusually hardy to frost.
2-in. pot.....\$.15
1-gal.45 5-gal.\$1.75
- Kama Puaa.** Large single cerise flowers overlaid with coral and amber, edged with gold. Beautiful foliage.
5-gal.\$2.00
- Kona** (Double Agnes Gault). This is a favorite of ours, being the double counterpart of Agnes Gault, in the same delightful shade, fully double in a graceful manner and more free blooming than most doubles.
2-in. pot.....\$.15
1-gal.45 5-gal.\$1.75
- Lavenda.** Small lavender flowers.
5-gal.\$2.00
- Moorea.** Large pink, veined deep pink with cherry throat. Bushy growth.
5-gal.\$2.00
- Orpha.** Double red. One of the hardiest of all Hibiscus.
2-in. pot.....\$.15
1-gal.45 5-gal.\$1.75
- Peach Glow.** Double flowers having the effect of one flower coming out of a larger base. Deep pink with a dark maroon zone at base of petals.
2-in. pot.....\$.15
1-gal.45 5-gal.\$1.75
- Princess Darling.** Small rose red single flowers. Very dainty.
5-gal.\$2.00
- Ruby Glow.** Beautiful double scarlet flowers. Very profuse bloomer.
5-gal.\$2.00
- Red Monrach** (Double Scarlet). Flowers best described as a double brillante. Very pleasing in form and color. Somewhat dwarfer in habit of growth.
5-gal.\$2.50
- Sun Down.** Double orange, with pink shading on the twisted petals. A very beautiful flower in sunset colors.
5-gal.\$2.00
- Walsh.** Yellow-buff, cut maple-like foliage.
5-gal.\$2.00
- White Wings.** Shrub with spreading graceful habit. Large white petals; red column and throat. Single. Hardy and free blooming.
5-gal.\$2.00

PRICES SUBJECT TO CHANGE WITHOUT NOTICE



HYDRANGEA, TROPHY

HYDRANGEA. French Hybrids

Chisholm. Large heads of double soft pink flowers.

2-in. pot.....\$.15
 1-gal.40 5-gal.\$1.60

Revelation. The best red. Plant in shade and give lots of water.

2-in. pot.....\$.15
 1-gal.40 5-gal.\$1.60

Trophy. The best French Hybrid. Brilliant salmon rose.

2-in. pot.....\$.15
 1-gal.40 5-gal.\$1.60

White. Giant clusters of large pure white flowers.

2-in. pot.....\$.15
 1-gal.40 5-gal.\$1.60

Hydrangea hortensis (Macrophylla)

Bushy shrub bearing large clusters of pink flowers. Prefers some shade and plenty of moisture.

2-in. pot.....\$.12
 1-gal.35 5-gal.\$1.45

Hydrangea hortensis variegata

A fine foliage plant with leaves variegated light green and white. Flat blue flowers. Shade, plenty of moisture.

2-in. pot.....\$.15
 1-gal.40 5-gal.\$1.45

BEFORE ORDERING READ PAGE 1 CAREFULLY

HYPERICUM moserianum

Low growing rounded shrub with arching branches clothed in narrow dark green leaves. Flowers bright golden yellow, 1 to 1½ inches across bearing clusters of brown stamens in the center. Plant in full sun.

2-in. pot.....\$.12
 1-gal.35 5-gal.\$1.45

Hypericum patulum henryi. Gold Flower

Low bushy shrub to 3 feet with light green foliage. Almost everblooming, it produces masses of bright light yellow flowers 1 to 1½ inches across. Yellow stamens. Stands poor dry soil very well. Sun.

2-in. pot.....\$.12
 1-gal.35 5-gal.\$1.45

ILEX cornuta. Chinese Holly

One of the best Hollies for California. Hardy medium to large shrub with deep green glossy leaves like the Christmas holly except leaves have few spines. Berries large bright red. Sun or part shade.

2-in. pot.....\$.17½
 1-gal.50 5-gal.\$1.75

Ilex Monroi

Evergreen medium sized shrub with large beautiful shiny dark green leaves and red berries.

1-gal.\$.50 5-gal.\$1.95



HYPERICUM PATULUM HENRYI

PRICES SUBJECT TO CHANGE WITHOUT NOTICE



ILEX CORNUTA BURFORDI

Ilex cornuta burfordi. Burford Holly

This ilex is the most prolific bearer of large bright red berries in the Southwest. Leaves deep glossy green almost without spines.

2-in. pot.....	\$.17½		
1-gal.50	5-gal.	\$1.95
Field grown	BB.....	15/18 in.	2.00
		18/24 in.	2.50

Ilex pernyi

Small evergreen shrub with small 3-spined holly leaves and bright red berries.

1-gal.	\$.50
-------------	--------

JACARANDA mimosaeifolia. Jacaranda

Medium size tree with large fern-like light green leaves and clusters of bignonia-like lavender blue flowers in June. Widely planted as a street tree and very showy.

2-in. pot.....	\$.15		
1-gal.40	5-gal.	\$1.75

JASMINUM grandiflorum. Spanish Jasmine

Hardy slender growing twining vine with deep green foliage and fragrant white flowers. Makes a quick growth and useful for covering fences, etc.

2-in. pot.....	\$.15		
1-gal.40	5-gal.	\$1.65

BEFORE ORDERING READ PAGE 1 CAREFULLY

Jasminum ligustrifolium (J. rigidum)

Glossy, broad light green leafed vine with creamy white star-shaped flowers in spring and summer. Sun or partial shade.

1-gal.\$.45

Jasminum primulinum. Primrose Jasmine

Strong growing vine for coast or interior sections. Winter blooming. Rich green stems and leaves and bright light yellow double flowers. Sometimes allowed to make a large shrub.

2-in. pot.....\$.12

1-gal.35 5-gal.\$1.65

Jasminum revolutum (J. Humile). Italian Jasmine

Semi-climber used either as a shrub or vine. Fragrant yellow flowers. One of the hardiest Jasmynes.

2-in. pot.....\$.12

1-gal.35 5-gal.\$1.65

JUNIPERUS chinensis Armstrongi. Compact Pfitzer

Fine grey green foliage, and more compact than Pfitzer's Juniper. Dwarf hardy variety. Useful shrub for foundation planting, etc.

2-in. pot.....\$.17½

1-gal.45

Field grown BB.....18/24 in.\$1.95

Juniperus chinensis pfitzeriana

Very hardy low growing juniper, dwarf and low spreading with soft deep green foliage. For low accent and ground cover.

2-in. pot.....\$.17½

1-gal.45 5-gal.\$1.75

Field grown BB.....18/24 in. 1.75

24/30 in. 2.00



PFITZER'S JUNIPER

Juniperus, Con't

Juniperus conferta. Shore Juniper

Low spreading juniper with needle-shaped light green leaves with white line on each. Excellent as a ground cover, hardy.

- 2-in. pot.....\$.17½
- 1-gal.45

Juniperus excelsa stricta. Spiny Greek Juniper

Slow growing conical close foliated steel blue juniper. Wonderful small accent shrub for the foundation planting or for garden planting. Needs no pruning to keep shape. Hardy.

- Field grown.....24/30 in.\$1.95

Juniperus horizontalis. Trailing Juniper

One of the finest junipers for covering banks, open areas and so forth. Creeping close to the ground, making a close cover of rich green foliage. Hardy.

- 2-in. pot.....\$.17½
- 1-gal.45
- 5-gal.\$1.75

Juniperus hibernica fastigiata. Irish Juniper

Tall slender column type. Makes a close foliated narrow column of deep blue green to 6 feet. Very hardy.

- 2-in. pot.....\$.15
- 1-gal.45
- Field grown.....24/36 in.\$1.95

Juniperus sabina tamariscifolia. Tamarix Juniper

Best known of the slow growing low spreading Junipers. Very hardy and useful for bank covers. in the foundation planting, where a shrub not over 10 or 12 inches high is required. Blue-green foliage. Very choice.

- 2-in. pot.....\$.20
- 1-gal.50
- 5-gal.\$1.95
- Field grown.....Spread....12/15 in. 1.95
- 15/18 in. 2.25
- 18/24 in. 2.75

Juniperus scopulorum columnaris

Tall growing columnar juniper with blue-green foliage. Makes a beautiful specimen 10 to 15 feet high. Hardy.

- 2-in. pot.....\$.17½
- 1-gal.45
- 5-gal.\$1.75
- Field grown BB.....24/30 in. 1.75
- 30/36 in. 2.00
- 36/48 in. 2.50
- 4/5 ft. 3.00
- 5/6 ft. 3.50

Juniperus torulosa. Hollywood Juniper

Fine textured dark green foliage. Makes an artistic specimen tree with twisted stems. Most unusual of all junipers.

- Field grown BB....2/3 ft.\$2.50
- 3/4 ft. 3.50

KOLKWITZIA amabilis. Beautybush

Hardy deciduous shrub of medium height with arching branches covered with small light green leaves and quantities of flowers in spring resembling weigelas—white with pink blush. Showy and refined shrub.

- 2-in. pot.....\$.15
- 1-gal.35
- 5-gal.\$1.45



CREPE MYRTLE, PINK

LAGERSTROEMIA indica rosea. Pink Crepe Myrtle
 Large specimen shrub or small tree; hardy and deciduous.
 Becomes a mass of crepe-textured rose pink flowers in summer.

2-in. pot.....\$.15	
1-gal.40	5-gal\$1.45

Lagerstroemia indica rubra. Red Crepe Myrtle
 Rose red flowers.

2-in. pot.....\$.15	
1-gal.40	5-gal\$1.45
	Standards 1.95

Lagerstroemia indica Pure White

2-in. pot.....\$.20	
1-gal.50	5-gal\$1.95

Lagerstroemia indica New Purple

1-gal.40

Lagerstroemia indica Watermelon Red

A bright colored and pleasing shade of red.

2-in. pot.....\$.20	
1-gal.50	5-gal\$1.95

PRICES SUBJECT TO CHANGE WITHOUT NOTICE

LANTANA camara

Rapid growing flowering shrub reveling in hot dry places in full sun. Flowers profusely even at an early age. We offer both dwarf types (growing 1 to 2 feet) and taller varieties.

Lantana Dwarf Pink

Bright pink flowers

2-in. pot.....\$.10
1-gal.30 5-gal.\$1.25

Lantana Dwarf Yellow

Bright yellow flowers

2-in. pot.....\$.10
1-gal.30 5-gal.\$1.25

Lantana Radiation

Bright orange and red flowers.

2-in. pot.....\$.10
1-gal.30 5-gal.\$1.25

Lantana White

Pure white flowers.

2-in. pot.....\$.10
1-gal.30 5-gal.\$1.25

Lantana sellowiana. Trailing Lantana

Low spreading shrub quite different from the above lantanas. Makes a dense mass of deep green foliage covered most of the year with clusters of lavender-pink flowers. Fine as a bank and ground cover plant; set 1 to 1½ feet apart.

2-in. pot.....\$.08 1-gal.25

LAURUS nobilis (*Prunus nobilis*). Bay Tree, Bay Laurel

Compact evergreen shrub of slow growth and thick dark green leaves. Stands shearing and can be trained as standards for tub planting. Sun or semi-shade. Bay leaves come from this.

5-gal.\$1.60

LAVENDULA pedunculata. Purple Plume Lavender

Shrubby perennial to 15 inches with silvery grey foliage and attractive purple flowers with characteristic showy plumes on top of each spike.

2-in. pot.....\$.15 1-gal.40

Lavendula vera. English Lavender

Dwarf compact shrubby perennial with silvery grey foliage and fragrant lavender flowers. Both foliage and flowers are scented with lavender. For sunny places.

2-in. pot.....\$.12 1-gal.35

LEPTOSPERMUM laevigatum. Australian Tea Tree

Tall growing evergreen shrub or small tree with very small rich green narrow leaves and sprays of pure white flowers in spring. Requires little water.

2-in. pot.....\$.10
1-gal.30 5-gal.\$1.45

Leptospermum reevesi. Dwarf Australian Tea Tree

Compact evergreen shrub with small oval leaves and white flowers.

2-in. pot.....\$.12
1-gal.35 5-gal.\$1.45

Leptospermum scoparium flore pleno

Free flowering evergreen shrub. Flowers like small double pink roses. Blooms several times a year. Plant in sun and provide good drainage. One of the best shrubs of recent introduction, showy and popular.

2-in. pot.....\$.15
1-gal.40 5-gal.\$1.45

LIGUSTRUM japonicum (*Ligustrum Kellermanni*)

Japanese Privet

Large leaved, fast growing evergreen shrub. Recommended as a tall or medium hedge plant.

1-gal.\$.25 Flat 2.50
5-gal.\$1.25



PINK TI-TREE
DWARF DOUBLE-FLOWERED LEPTOSPERMUM

Ligustrum nepalense (sinensis). Nepal Privet

Small green leaves, white flowers followed by blue-black berries.

1-gal.\$.25 Flat\$2.50

Ligustrum ovalifolium variegatum. Golden California Privet

Easily grown evergreen shrub with small closely set golden yellow leaves. Much used for hedges or as clipped specimens. Rapid growth.

1-gal.\$.30

Ligustrum texanum. Camellia leafed Ligustrum

Makes an excellent specimen evergreen shrub or a closely set deep green hedge. Leaves thick textured, dark and glossy, stands shearing very well.

2-in. pot.....\$.12	
1-gal.35	5-gal.\$1.45
Field grown	2-3 ft. 1.75
	3-4 ft. 1.95
Pyramids	24-30 in. 2.25

LINUM flavum. See Reinwardia.

PRICES SUBJECT TO CHANGE WITHOUT NOTICE

LIPPIA citriodora. Lemon Verbena

Medium size deciduous shrub with light green aromatic foliage and loose panicles of tiny white to pale lavender flowers. Entire plant has lemon scent when touched or bruised.

2-in. pot.....\$.12
 1-gal.35 5-gal.\$1.45

LIQUIDAMBAR styraciflua. Sweet Gum

Tall deciduous tree with a pyramidal head of maple-shaped leaves of deep rich green, but assuming very brilliant shades of crimson and bronze in fall. One of the few trees with bright autumn coloration for California. Very hardy.

2-in. pot.....\$.12
 1-gal.35 5-gal.\$1.60

LILAC. See syringa.

LONICERA heckrotti. Coral Honeysuckle

Climbing twining vine with 2-inch oval leaves and brilliantly colored honeysuckle flowers of coral red and yellow. Hardy.

2-in. pot.....\$.15
 1-gal.40 5-gal.\$1.60

Lonicera japonica halliana. Hall's Japanese Honeysuckle

Vigorous twining vine much used as a ground cover or for covering fences, arbors, etc. Leaves deep green and densely set, covered with fragrant white to yellow flowers for a long season.

2-in. pot.....\$.10
 1-gal. bushy25 Staked\$.35

LOQUAT. See Eriobotrya japonica.

MAGNOLIA grandiflora. Southern Magnolia

Medium size evergreen tree to 30 feet with spreading head of large deep green glossy leaves and immense lily-like white fragrant flowers. Excellent specimen and street tree.

2-in. pot.....\$.15
 1-gal.40 5-gal.\$1.75

MAHONIA aquifolium. Oregon Grape

Medium size evergreen shrub for sun or shade. Hardy. Has deep glossy green holly-like foliage, clusters of yellow flowers followed by blue grape-like berries.

2-in pot.....\$.12
 1-gal.35

MANDEVILLEA suaveolens. Chile Jasmine

Quick growing twining vine with waxy large light green pointed leaves and clusters of fragrant white tubular flowers with spreading petals 1½ to 2 inches across.

1-gal.\$.45 5-gal.\$1.75

METROSIDEROS tomentosa. Iron Tree

Tree with large 4-inch lanceolate, leathery leaves. Has dark red flowers in dense terminal cymes.

2-in. pot.....\$.12
 1-gal.35

MEYER LEMON. See Citrus Meyer Lemon.

MURRAYA exotica (Murrea). Orange Jessamine

Delightful evergreen shrub 6 to 10 feet high with luxuriant deep green small foliage and quantities of small waxy white flowers with intense fragrance of orange blossoms.

5-gal.\$1.75

Murraya Paniculata (Murrea)

An improved dwarf compact growing variety. Like the above except for the dwarfer and denser growth. The best murraya.

2-in. pot.....\$.17 ½

1-gal.40

5-gal.\$1.60

MUSA ensete. Abyssinian Banana

Strictly an ornamental banana used for tropical effects in planting. Should be planted in a protected location. Makes a very impressive large specimen plant.

5-gal.\$1.95

MYOPORUM laetum

Shrub or small tree with bright shiny leaves and purple spotted white flowers. An exceptionally fine plant for use near the sea coast.

2-in. pot.....\$.12

1-gal.35

5-gal.\$1.45

MYRSINE africana. African Boxwood

A fine compact evergreen shrub with small rounded leaves like boxwood. Grows 2 to 3 feet high and does well in sun or partial shade either at the coast or inland.

2-in. pot.....\$.15

1-gal.40

5-gal.\$1.75

Field grown18-24 in. 1.75

24-30 in. 1.95

30-36 in. 2.50

MYRTUS communis buxifolia. Boxleaf Myrtle

Medium to large shrub making a compact hedge or specimen. Leaves larger than compacta, more to the size of boxwood, dark, glossy, green. Creamy white fluffy flowers in spring. An improvement on Myrtus communis.

2-in. pot.....\$.12

1-gal.35

5-gal.\$1.45

Myrtus communis compacta. Dwarf Myrtle

A slow growing very compact evergreen shrub with small glossy green leaves. One of the finest low growing shrubs for hedge planting.

2-in. pot.....\$.12

1-gal.30

5-gal.\$1.45

Myrtus communis variegata

Small compact evergreen shrub for sun or partial shade. Leaves variegated with white, silver and green. Blue berries in winter may result if several plants are planted.

2-in. pot.....\$.15

1-gal.40



OLEANDER

NANDINA domestica. Heavenly Bamboo

Not a bamboo. Low shrub to 3 or 4 feet with erect stems clothed in much divided leaves which assume brilliant red tints in autumn. White flowers followed by brilliant red berries in winter.

2-in. pot.....\$.12
 1-gal.35 5-gal.\$1.45

NERIUM oleander. Oleander

Large evergreen shrubs with long narrow dark green leaves and showy clusters of waxy brightly colored flowers in summer. Withstands heat and drouth, doing equally well in hot dry areas and at the sea coast. All thrive with little care.

Nerium Cherry Ripe

Brilliant rosy-red single flowers.

2-in. pot.....\$.12
 1-gal.35 5-gal.\$1.45

Nerium Compte Earthelemy

Large double flowers, bright red, sometimes streaked with white.

2-in. pot.....\$.12
 1-gal.35 5-gal.\$1.45

Nerium Jannoch

Finest single red. Good deep color. Free flowering.

2-in. pot.....\$.12
 1-gal.35 5-gal.\$1.45

BEFORE ORDERING READ PAGE 1 CAREFULLY

Monrovia, California

Nerium Mrs. Roeding

Dwarfer in habit. Double salmon pink flowers in abundance.

2-in. pot.....\$.12	
1-gal.35	5-gal.\$1.45

Nerium Rosea

Double rose-pink oleander

2-in. pot.....\$.12	
1-gal.35	5-gal.\$1.45

Nerium Sister Agnes

Free flowering pure white, single.

2-in. pot.....\$.12	
1-gal.35	5-gal.\$1.45

OSMANTHUS fragrans. Sweet Olive

A very choice evergreen shrub for sun or partial shade. The dense dark green foliage conceals the tiny white flowers which perfume the air with their delightful fragrance. Use as a specimen shrub or in espalier.

2-in. pot.....\$.17½	
1-gal.40	5-gal.\$1.95
Field grown	18-24 in. 1.75
24-30 in. 1.95	30-36 in. 2.25

Osmanthus delavayi

Evergreen shrub to 5 feet with small holly like dark green leaves and showy panicles of white flowers. Compact slow growth make this an ideal refined specimen shrub.

2-in. pot.....\$.17½	1-gal.50
-----------------------	-----------------



PASSIFLORA PFORDI

PRICES SUBJECT TO CHANGE WITHOUT NOTICE

PASSIFLORA edulis. Passionfruit. Purple granadilla
Fast growing evergreen vine climbing by tendrils. Flowers about 2 inches across of typical passion flower form, white with blue markings followed by purple plum shaped fruits. Edible and used mostly in making fruit juices.

2-in. pot.....\$.12
1-gal.40 5-gal.\$1.60

Passiflora pfordi

The most beautiful passion vine with 4-inch flowers, white with pinkish tints with a purple-blue crown in center. Quick growing, producing excellent light green foliage screen. Sun or shade.

2-in. pot.....\$.15
1-gal.\$.45 5-gal.\$1.75

PHILADELPHUS mexicanus. Climbing Syringa

Evergreen shrub 6 to 8 feet high with spreading or semi-climbing habit, useful as ground cover, over banks, on trellis or as a shrub. Fragrant creamy-white flowers in abundance.

1-gal.\$.35

Philadelphus coronarius. Syringa. Mock Orange

Tall growing deciduous shrub—the popular old-fashioned syringa of colder climates. Bears quantities of single white flowers for cutting. Very hardy and quick growing.

2-in. pot.....\$.12 1-gal.35

Philadelphus virginial

The finest philadelphus, far superior to other varieties. Large double and semi-double pure white flowers are abundantly produced all spring and summer. Medium size refined deciduous shrub. Sun.

2-in. pot.....\$.15
1-gal.40 5-gal.\$1.45

PHOTINIA serrulata nova. Chinese Photinia

Large evergreen shrub with 4 to 5 inch long toothed leaves. Reddish green when young, becoming darker. Clusters of white flowers followed by bright red berries. Hardy.

2-in. pot.....\$.15
1-gal.40 5-gal.\$1.45

PINUS canariensis. Canary Island Pine

Tall slender pine tree making rapid growth. Long needles in large tufts make this a fine specimen. New growth silvery blue.

2-in. pot.....\$.12
1-gal.35 5-gal.\$1.45

Pinus halepensis. Aleppo Pine

A fast growing pine recommended for dry locations. Needles bright green.

2-in pot.....\$.12
1-gal.35 5-gal.\$1.45

Pinus radiata (Pinus insignis). Monterey Pine

Fast growing pine for quick effects. Very bushy when young. Bright green needles. Makes a medium size picturesque tree when older.

2-in. pot.....\$.10 Flats\$3.00
1-gal.35 5-gal. 1.45

PITTOSPORUM crassifolium. Karo Pittosporum

Tall shrub or small tree. Dark green leaves 2 to 3 inches long with silvery undersides. Creamy white flowers in loose clusters. Suitable as a windbreak or screen plant.

2-in. pot.....\$.12 1-gal.35

Pittosporum eugenioides. Tarata Pittosporum

Large shrub or small tree with light green foliage. This is the best substitute for Eugenias in areas subject to frost.

2-in. pot.....\$.10 Flats\$3.00
1-gal.35 5-gal. 1.45



PRINCESS FLOWER

Pittosporum rhombifolium. Queensland P., Diamondleaf P.
Large shrub or small tree with attractive light green foliage, white flowers followed by orange berries.

2-in. pot.....	\$.12	
1-gal.35	5-gal.\$1.45

Pittosporum tobira

Dense growing evergreen shrub of medium to large size, more spreading than tall. Leaves long and narrow with rounded ends dark shiny green. Fragrant white flowers. Hardy.

2-in. pot.....	\$.10	Flats	\$3.00
1-gal.35	5-gal.	1.45
Field grown	BB....	18-24 in.	1.75
		24-30 in.	1.95

Pittosporum tobira variegata

Similar to the above but dwarfer in habit and foliage a pleasing combination of light green and white variegated leaves.

2-in. pot.....	\$.15		
1-gal.40	5-gal.\$1.60	
Field grown	BB....	18-24 in.	1.95
		24-30 in.	2.50

Pittosporum undulatum. Victoria Box

Large shrub or small tree with rich green pointed leaves with wavy edges; fragrant creamy-white flowers followed by orange berries. Very desirable for screen and parkway planting.

2-in. pot.....	\$.10	Flats	\$3.00
1-gal.35	5-gal.	1.45

PLEROMA grandiflora (tibouchina). Princess Flower

Large evergreen shrub with bronzy green velvety leaves and huge colorful purple flowers, rich and velvety, about 3 to 4 inches across. Somewhat tender to frost.

2-in. pot.....	\$.12	
1-gal.35	5-gal.\$1.45

PLUMBAGO capensis. Cape Plumbago

Semi-climbing shrub of most desirable habit both at sea coast and desert where it makes a mass of bright green foliage and phlox like clusters of pale blue flowers for a long period. Requires very little attention.

2-in. pot.....\$.10
 1-gal.35 5-gal.\$1.45

PLUMBAGO. See also Ceratostigma.

PODOCARPUS macrophylla

One of the finest evergreen specimen shrubs. Often trained by slight pruning to make a tall slender column of deep green narrow leaves. Stands considerable shade or light sun. Will grow as a tubbed plant indoors, as in hotels, etc.

2-in. pot.....\$.12
 1-gal.40 5-gal.\$1.45

POINSETTIA Henrietta Ecke. Double Poinsettia

The finest of the double flowering Poinsettias. Produces large heads of brilliant red flowers around Christmas and for a considerable time thereafter. Cut back to 1 foot after flowering. Give full sun and good soil.

1-gal.\$.35

POLYGALA dalmaisiana. Sweetpea Shrub

A small to medium size shrub, evergreen with almost continuous flowering habit. Leaves small light green, like box but pointed, dense and covered with orchid-like purple flowers. Prefers a dry soil. Useful in the foundation planting.

2-in. pot.....\$.15
 1-gal.40 5-gal.\$1.45

POLYGONUM auberti. Silver Lace Vine, Chinese Fleece Vine

Hardy climbing twining vine much used on arbors, fences, etc., where the mass of slender stems and light green foliage makes a fine cover and plumes of tiny white to pinkish flowers last for a long time. Full sun. Not particular to soil.

5-gal.\$1.75

PRUNUS carolinana. Carolina Cherry

Large shrub for background planting or a small tree with dark glossy green foliage. Very nice in habit, white flowers followed by small dark berries.

2-in. pot.....\$.10
 1-gal.35 5-gal.\$1.45

Prunus integrifolia (lyoni). Catalina Cherry

Large slow growing shrub or small tree with light green, spiny toothed foliage; white flowers and purple fruits.

2-in. pot.....\$.15
 1-gal.40 5-gal.\$1.60

Prunus Laurocerasus. English Laurel

Large shrub with heavy rich green foliage. Can be sheared into specimen plants or tall hedges. Leaves broad and glossy. Hardy. Will not grow in alkaline soil.

2-in. pot.....\$.15 1-gal.40
 Field grown18-24 in.\$1.75

Prunus lusitanica. Portuguese Laurel

Evergreen shrub much like English laurel but leaves darker green, narrower and toothed. Hardy, compact growing.

1-gal.\$.40

Prunus nobilis. See Laurus nobilis

PUNICA Chico. Dwarf Carnation Flowered Pomegranate

One of the finest dwarf shrubs on our list. Deciduous but close growing, round in outline, 1 to 2 feet high. Leaves light green; flowers like bright red carnations in summer.

2-in. pot.....\$.15
 1-gal.35 5-gal.\$1.45

Punica granatum nana. Dwarf Pomegranate

Dwarf, compact and bushy shrub. Deciduous, slightly taller than Chico producing single red flowers and abundant fruits of ornamental value only.

2-in. pot.....\$.10 Flats\$3.00
 1-gal.30 5-gal. 1.25



PYRACANTHA ROSEDALE
(Trade Mark Reg.)

Punica sempervirens

Large deciduous shrub (6 feet) with graceful branches, light green foliage and profuse double orange-scarlet flowers.

2-in. pot.....	\$.12		
1-gal.35	5-gal.	\$1.45

Punica sempervirens variegata

Like the above but the flowers are variegated white and red.

2-in. pot.....	\$.12		
1-gal.35	5-gal.	\$1.45

PYRACANTHA graberi. Grabers Firethorn

Large evergreen shrub with glossy evergreen foliage and huge clusters of large orange-red berries.

Bush Type

2-in. pot.....	\$.15		
1-gal.45	5-gal.	\$1.60

Pyramid Type—Trained Specimens

1-gal.	\$.70	5-gal.	\$1.90
-------------	--------	-------------	--------

Pyracantha Lalandi Monrovia

Hardy pyracantha. Long arching branches with dark green foliage and sprays of bright orange berries in winter. Useful in colder climates.

2-in. pot.....	\$.15		
1-gal.40	5-gal.	\$1.60

Pyracantha Rosedale

The lovely Pyracantha shown above, introduced by us several years ago, has achieved outstanding popularity by distinction for its show of red berries, resistance to blight and general all-around vigor. The long arching stems bear quantities of white flowers in spring and are loaded with berries each year. Has the darkest red berries of any Pyracantha.

2-in. pot.....	\$.17½		
1-gal.50	5-gal.	\$1.75

Espalier—Trained

5-gal.	\$3.75
-------------	--------

Pyramid—Trained, Staked and Fruned

1-gal.	\$.75	5-gal.	\$2.00
-------------	--------	-------------	--------

PRICES SUBJECT TO CHANGE WITHOUT NOTICE

RAPHIOLEPIS ovata. Round leaf Raphiolepis

Medium to large evergreen shrub with rounded dark green leathery leaves of medium size; clusters of fragrant white flowers and black berries. Hardy in sun and shade.

2-in. pot.....\$.15

REINWARDTIA indica. Dwarf Yellow Flax

Small shrubby perennial to 2 feet with glossy green leaves and clusters of bright yellow bell shaped flowers in winter. Sun or partial shade. Tender.

2-in. pot.....\$.15

1-gal.35 5-gal.\$1.45

Reinwardtia trigyna (*Linum flavum*). Yellow Flax

Dwarf compact shrub with clean light green foliage resembling phlox and bearing clusters of bright yellow flowers. Sun. 1 to 2 feet.

2-in. pot.....\$.12

1-gal.35

RHAMNUS alaternus. Italian Buckthorn, Coffee Berry

Large shrub with thick, medium-size dark green leaves and red to black berries. Will grow anywhere with little attention.

5-gal.\$1.45

RONDELETIA amoena

Dense growing rounded shrub 4 to 6 feet high. Fragrant flowers in large dense clusters, rich pink with yellow beard. For the coastal and foothill regions.

2-in. pot.....\$.15

1-gal.40 5-gal.\$1.60

Rondeletia cordata. Jungle Queen

Dense growing shrub. Flowers waxy pink, so perfect they resemble artificial flowers. Leaves thick, shiny green and leathery, medium in size. A most attractive foliage all year around.

2-in. pot.....\$.15

1-gal.45 5-gal.\$1.65

ROSEMARINUS officinalis. Rosemary

Medium to tall evergreen shrub with aromatic foliage. Often listed in the culinary herbs. Leaves narrow deep green with white undersides and light lavender to white flowers.

2-in. pot.....\$.12

1-gal.35 5-gal.\$1.45

RUELLIA macrantha

Showy everblooming shrub for the milder climates. Large leaves and big dark lavender funnel-shaped flowers. Best in partial shade and a sheltered position.

2-in. pot.....\$.12

1-gal.35



RONDELETIA CORDATA, JUNGLE QUEEN

SALVIA pitcheri. Blue Salvia

Hardy perennial growing 2 to 2½ feet high with greyish green foliage and showy deep blue flowers. Very showy and useful for cutting.

2-in. pot.....\$.12

1-gal.35

SCHINUS molle. California Pepper Tree

Medium to large round headed hardy tree. Graceful weeping branches and feathery foliage. Insignificant flowers followed by tiny bright red or coral colored berries.

2-in. pot.....\$.10

1-gal.35 5-gal.1.60

Schinus terebinthifolia. Brazilian Pepper Tree

Medium size tree. Leaves larger and darker green; berries red. A more refined tree than molle and should be more widely planted.

2-in. pot.....\$.10

1-gal.35 5-gal.1.60

SECURIDACA volubilis. Evergreen Wisteria

One of the best vines of recent introduction. Light rich green shiny foliage and showy clusters of blue wisteria-like flowers. Revels in full sun and brilliant over fences, etc.

2-in. pot.....\$.15

1-gal.45 5-gal.1.60

PRICES SUBJECT TO CHANGE WITHOUT NOTICE

SEQUOIA sempervirens. Coast Redwood

Tall narrow evergreen tree producing a straight trunk with reddish bark and narrow spreading deep green foliage. Fast growing, hardy conifer.

1-gal.\$.45 5-gal.\$1.65

SILVER LACE VINE. See Polygonum.

SOLANUM Rantonetti improved. New Blue Solanum

Medium to large free blooming evergreen shrub or vine. Flowers an interesting cart-wheel pattern, an inch across in deep blue with bright orange hub.

2-in. pot.....\$.12
 1-gal.35 5-gal.\$1.45
Pyramid trained.....5-gal. 1.75
Espalier trained.....5-gal. 2.95

SOLLYA heterophylla. Australian Blue-bell

Trailing shrub or creeping vine useful as a ground cover, as a low shrub or even as a low hedge. Foliage small, dark green leaves and small blue bell shaped flowers.

2-in. pot.....\$.15
 1-gal.40 5-gal.\$1.45

SPARTIUM junceum. Spanish Broom

Medium to large, apparently leafless shrub with graceful erect green stems. Large bright yellow fragrant pea-shaped flowers in spring. Hardy and fast growing.

1-gal.\$.35



SOLANUM RANDONETTI, IMPROVED

Monrovia, California

SPIREA Anthony Waterer. Dwarf Pink Spirea

Dwarf deciduous shrub about 2 feet tall, with compact growth and flat heads of rosy-pink flowers. Full sun.

2-in. pot.....\$.12
1-gal.35 5-gal.\$1.45

Spirea reevesiana (*S. contoniensis*). Double Bridal Wreath

Deciduous shrub to 5 feet with arching branches covered with a profusion of clusters of double white flowers in spring. Hardy.

2-in. pot.....\$.12
1-gal.35 5-gal.\$1.45

Spirea van houttei

All over the country this spring blooming spirea is widely planted and relished for the festoons of tiny white single flowers that clothe the arching branches in spring. Hardy.

2-in. pot.....\$.12
1-gal.35 5-gal.\$1.45

STRANVAESIA davidiana. Chinese Stranvaesia

Large hardy evergreen shrub with 4 to 5 glossy dark green leaves becoming purple, bronze and red in the fall. Bright red fruits are ornamental.

1-gal.\$.50 5-gal.\$1.75

STRELITZIA reginae. Bird of Paradise

Very popular as a specimen flowering shrub or as a cut flower. Banana-like foliage from a tuft and long stems, each bearing a crested "bird like" flower of orange and blue.

5-gal.\$2.50

SYRINGA persica laciniata. Cutleaf Persian Lilac

The most reliable lilac for planting in southern California. Deciduous shrub to 6 feet with finely cut light green leaves and long sprays of bright lavender lilac flowers in spring. Fragrant.

2-in. pot.....\$.15
1-gal.40 5-gal.\$1.45

TAMARIX coolidgei. Pink Tamarix

Much planted in desert areas for the drouth and heat resisting ability of this shrub. Large in size with plummy light green scale-like leaves and billowy masses of pink flowers.

2-in. pot.....\$.12
1-gal.35 5-gal.\$1.45

TECOMA capensis (*Tecomaria capensis*). Cape Honeysuckle

Free growing large shrub or vine with glossy green pinnate leaves and brilliant clusters of orange-red trumpet shaped flowers most of the year. Easy to grow and quite hardy.

2-in. pot.....\$.12
1-gal.35 5-gal.\$1.45

Tecoma jasminoides rosea (*Pandorea jasminoides*)

Two-toned Trumpet Flower

Delicate climbing evergreen vine. Light green foliage and large clusters of light pink flowers with deep crimson throats. For sun or partial shade.

2-in. pot.....\$.15
1-gal.45 5-gal.\$1.75

Tecoma shirensis

Twining vine for full sun. Two-inch flaming orange trumpets in winter and early spring.

1-gal.\$.35

THEVETIA neriifolia (*Cerbera thevetia*). Yellow Oleander

Resembling Oleanders but not quite as hardy, this large evergreen shrub has the same kind of foliage but large light yellow funnel-shaped flowers. Plant in sun.

5-gal.\$1.60

PRICES SUBJECT TO CHANGE WITHOUT NOTICE



BERCKMAN'S GOLDEN ARBOR VITAE

THUNBERGIA grandiflora. Blue Sky Vine, Clock Vine

Twining evergreen vine making a lush rapid green cover with large sky-blue trumpets with white throats. Flowers in large clusters are quite showy. For sheltered locations. Sun.

2-in. pot.....	\$.15	
1-gal.45	5-gal.\$1.75

THUYA orientalis aurea nana. Dwarf Golden Arborvitae. Berckman's Golden Arborvitae

Most popular dwarf arborvitae. Slow growing, dense and shaped like a pointed globe. Fern-like branchlets bright golden yellow all year around. Full sun. Hardy.

2-in. pot.....	\$.17½	
1-gal.50	5-gal.\$1.95
Field grown	BB.....	12-15 in. 1.95
		15-18 in. 2.50
		18-24 in. 3.00

Thuya orientalis bakeri

A compact growing pyramidal arborvitae. Foliage has a light green color. Very good as a taller accent conifer. Better for hot dry locations.

2-in. pot.....	\$.15	
1-gal.40	5-gal.\$1.70
Field grown	BB....	2-3 ft. 1.95

BEFORE ORDERING READ PAGE 1 CAREFULLY

Monrovia, California

Thuya orientalis beverleyensis. Beverley Hills Arborvitae
Slender growing conifer with bright golden yellow foliage.

2-in. pot.....	\$.17 ½		
1-gal.50	5-gal.	\$1.95
Field grown	BB.....	2-3 ft.	1.95
		3-4 ft.	2.50

Thuya orientalis Blue Spire. Blue Column Arborvitae
Fine bright green foliage with bluish tips.

2-in. pot.....	\$.15		
1-gal.40	5-gal.	\$1.75
Field grown	BB....	2-3 ft.	1.95
		3-4 ft.	2.50

Thuya orientalis compacta (Sieboldii). Compact Arborvitae
Attractive compact globe-shaped conifer with bright green dense foliage.

2-in. pot.....	\$.15		
1-gal.40	5-gal.	\$1.75
Field grown		12-15 in.	1.75
15-18 in.	1.95	18-24 in.	2.25
		24-30 in.	2.50

Thuya orientalis pyramidalis

Tall narrow pyramid of compact deep green foliage. One of the best arborvitae for accent planting.

2-in. pot.....	\$.15		
1-gal.40	5-gal.	\$1.75
Field grown	BB....	2-3 ft.	1.95

ULMUS sempervirens (U. Parrifolia). Evergreen Elm

A fine small tree for lawn planting. Makes a flattened spreading rounded head with gracefully arching branches and small deep green leaves. Evergreen.

2-in. pot.....	\$.17 ½	5-gal.	\$1.95
----------------	----------	-------------	--------

VERONICA andersoni (Hebe). Speedwell

Compact evergreen shrub with smooth light green leaves and pointed spikes of lavender-blue flowers. Almost ever-blooming.

2-in. pot.....	\$.12	1-gal.35
----------------	--------	-------------	-----

Veronica imperialis (Hebe speciosa)

Thick rounded leaves with purple veins. Flowers in pointed spikes, deep wine red. Veronicas are excellent evergreen shrubs for planting in coastal areas even in exposed places.

2-in. pot.....	\$.12	1-gal.35
----------------	--------	-------------	-----

VIBURNUM burkwoodi. Gardenia-scented Viburnum

Evergreen or partially deciduous shrub to 5 or 6 feet. The flowers, having an exquisite fragrance, are borne in 2-in. ball shaped clusters. Waxy white with pink flush. Hardy.

1-gal.	\$.45	5-gal.	\$1.75
-------------	--------	-------------	--------

Viburnum cinnamonifolium

Large evergreen shrub with large 5-inch leaves, masses of white flowers followed by blue-black berries. Promises to be an excellent specimen shrub and useful in background for screening.

1-gal.	\$.45
-------------	--------

Viburnum japonicum

Beautiful compact shrub with large light green foliage and clusters of white flowers.

2-in. pot.....	\$.12		
1-gal.35	5-gal.	\$1.45
Field grown		2-3 ft.	1.95
		3-4 ft.	2.50

Viburnum opulus sterile. Eastern Snowball

Hardy deciduous shrub to 8 feet. Flowers in globular clusters pure white in May and June. Easy to grow.

2-in. pot.....	\$.15		
1-gal.40	5-gal.	\$1.60

PRICES SUBJECT TO CHANGE WITHOUT NOTICE

Viburnum robustum (V. tinus)

Medium to large evergreen shrub with luxuriant deep green foliage. White flowers in clusters, often blushed with pink are followed by black berries. Sun or shade. Improvement on V. tinus, practically mildew proof.

2-in. pot.....	\$.12		
1-gal.35	5-gal.	\$1.45
Field grown		2-3 ft.	1.75

Viburnum suspensum. Sandankwa

One of the finest evergreen shrubs for foliage and flowers. Fragrant white flowers followed by black berries. Sun or shade.

2-in. pot.....	\$.12		
1-gal.35	5-gal.	\$1.45
Field grown		18-24 in.	1.45
24-30 in.	1.75	30-36 in.	2.50

Viburnum tinus. See Viburnum robustum.

VITEX lucens. Chaste Tree

A beautiful large shrub or small tree with luxuriant semi-tropical appearing foliage above which rise long spikes of dark red flowers in summer and autumn.

5-gal.	\$1.95
-------------	--------

WEIGELA Bristol Ruby

A new deep red flowered Weigela. Excellent dark green foliage. Full sun. Hardy. Deciduous.

2-in. pot.....	\$.17½
1-gal.45

Weigela Eva Rathke

Bright red honeysuckle-like flowers A beautiful shrub to 6 ft. Sun.

2-in. pot.....	\$.12		
1-gal.35	5-gal.	\$1.45

Weigela rosea (Weigela florida). Pink Weigela

Medium to large size deciduous shrub producing masses of pink flowers in spring. Excellent light green foliage. Sun.

2-in. pot.....	\$.12		
1-gal.35	5-gal.	\$1.45

Weigela rosea variegata

Foliage variegated white and green. Effective for foliage contrasts, and heavy bloom of pink and white flowers.

2-in. pot.....	\$.12		
1-gal.35	5-gal.	\$1.45

WESTRINGIA rosmarinifolia

Lovely deep green foliage with silvery undersides. Leaves small and close together and during the winter the shrub is covered so completely with white flowers as to suggest a silver blanket.

2-in. pot.....	\$.12		
1-gal.35	5-gal.	\$1.45

XYLOSMA heterophylla

A new improved dwarf growing Xylosma. Foliage deep glossy green.

2-in. pot.....	\$.15		
1-gal.45	5-gal.	\$1.60

Xylosma senticosa (Myroxyton senticosum)

Trailing shrub with light green glossy foliage. Recommended for narrow places as a ground cover, or espaliered on a trellis or wall. Always an attractive foliage shrub showing reddish tints in the new growth.

2-in. pot.....	\$.15		
1-gal.45	5-gal.	\$1.60

CHECK LIST OF PLANTS FOR SPECIAL USES

CONIFERS

- | | | |
|----------------------|------------------|-------------------------|
| Cedrus | Juniperus | Pinus |
| Chamaecyparis | armstrongi | canariensis |
| Laws. Stewarti | pfitzeriana | halepensis |
| Laws. Alumi | conferta | radiata |
| Cupressus | excelsa stricta | Sequoia |
| arizonica | horizontalis | sempervirens |
| forbesii | hib. fastigata | Thuja orientalis |
| semp. glauca | tamariscifolia | aurea nana |
| | columnaris | bakerii |
| | torulosa | beverlyensis |
| | | Blue Spire |
| | | compacta |
| | | pyramidalis |

DECIDUOUS SHRUBS

- | | | |
|------------------|---------------------|------------------------|
| Amygdalus | Kolkwitzia | Spirea |
| alba nana | | Anthony |
| rosea nana | Philadelphus | Waterer |
| | Virginal | reevesiana |
| | coronarius | Van Houttei |
| Cydonia | Punica | Syringa persica |
| rosea nana | Chico | |
| rubra | granatum nana | Viburnum |
| | sempervirens | opulus sterile |
| | sempervirens | Weigela |
| | var. | Bristol Ruby |
| Hydrangea | Salvia | Eva Rathke |
| Chisholm | | rosea |
| Revelation | | rosea var. |
| Trophy | | |
| White | | |
| Hortensis | | |
| Hortensis Var. | | |

TREES

- | | | |
|--------------------------|--------------------------|----------------------|
| Acacia | Eucalyptus | Jacaranda |
| baileyana | citrodora | Lagerstroemia |
| dealbata | ficifolia | indica rubra |
| floribunda | globulus | Liquidambar |
| melanoxydon | globulus | Loquat |
| podalyriaefolia | compacta | Magnolia |
| Bauhinia | pulverulenta | grandiflora |
| Camphora | sideroxydon | |
| Ceratonia | rosea | Schinus |
| Cocos (Palm) | Ficus retusa | molle |
| Dracaena indivisa | Fraxinus | terebinthifolia |
| Eriobotrya | (Shamel Ash) | Ulmus |
| | Grevillea robusta | sempervirens |
| | | Vitex |

May Be Grown as Trees

- | | | |
|-----------------|--------------------|---------------|
| Eugenia | Pittosporum | Prunus |
| Myoporum | undulatum | |

VINES

- | | | |
|------------------------|----------------------------|--------------------|
| Ampelopsis | Cissus | Lonicera |
| quinquefolia | hypoglauca | heckrottii |
| veitchii | rhombofolia | j. halliana |
| Asparagus | Euonymus | Mandevillea |
| plumosa | f. radicans | Passiflora |
| | Ficus | edulis |
| | repens | pfordi |
| Bigonia | Gelsemium | Polygonum |
| chamberlayni | Hedera | Securidaca |
| cherere | canariensis | Solanum |
| tweediana | canariensis | Sollya |
| violacea | variegata | Tecoma |
| Bougainvillea | helix | capensis |
| America (Mission Hill) | Hibbertia volubilis | jasminoides |
| Barbara Karst | Jasminum | rosea |
| braziliensis | grandiflorum | shirensis |
| Crimson Lake | ligustrifolium | Thunbergia |
| Panama Queen | primulinum | grandiflora |
| | revolutum | |

CROSS REFERENCE LIST TO PLANT NAMES

Common Names	See Scientific Name
African Boxwood	Myrsine
Arborvitae	Thuja
Australian Blue Bell	Sollya
Australian Fuchsia	Correa
Australian Tea Tree	Leptospermum
Beautybush	Kolkwitzia
Berckman's Golden Arborvitae	Thuja aurea nana
Blue Lawson	Chamaecyparis
Blue Sky Flower	Thunbergia
Boston Ivy	Ampelopsis
Bottlebrush	Callistemon
Boxwood	Buxus
Brazil Sky Flower	Duranta
Breath of Heaven	Diosma
Bridal Wreath	Spiraea
Brazilian Pepper	Schinus
Burford Holly	Ilex
California Pepper	Schinus
California Laurel	Prunus
Camphor Tree	Camphora
Carob Tree	Ceratonia
Carolina Cherry	Prunus
Carolina Jessamine	Gelsemium
Cashmir Bouquet	Clerodendron
Catalina Cherry	Prunus
Chilean Jasmine	Mandevillea
Coral Vine	Antigonon
Creeping Fig	Ficus
Crepe Myrtle	Lagerstroemia
Canary Bird Bush	Crotalaria
Dracaena Palm	Dracaena
English Laurel	Prunus
Evergreen Grape	Cissus
False Hop	Beloperone
Fern Pine	Podocarpus
Flame Pea	Chorizema
Flax	Reinwardtia
Flowering Almond	Amygdalus
Flowering Maple	Abutilon
Flowering Quince	Cydonia
Gold Dust Plant	Aucuba
Gold Flower	Hypericum
Gold Guinea Vine	Hibbertia
Golden Bell	Forsythia
Heather	Erica
Heavenly Bamboo	Nandina
Holly	Ilex
Honeysuckle	Lonicera
Hummingbird Bush	Grevillea
Incense Cedar	Libocedrus
Indian Hawthorn	Raphiolepis
Italian Cypress	Cupressus
Italian Jasmine	Jasminum
Ivy	Hedera
Jungle Queen	Rondeletia
Kashmir Bouquet	Clerodendron
Lavender	Lavendula
Lemon Verbena	Lippia
Lilac	Syringa
Yellow Flax	Reinwardtia
Yellow Oleander	Thevetia
Yesterday and Today	Brunfelsia

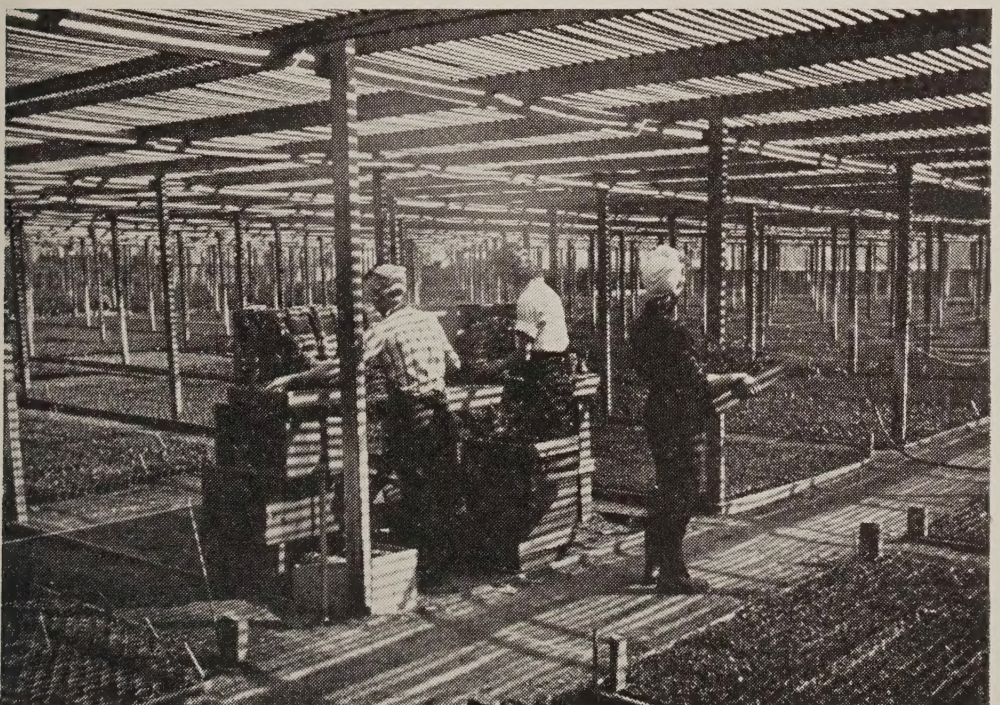
BEFORE ORDERING READ PAGE 1 CAREFULLY

Monrovia, California

Common Names

See Scientific Name

Lily of the Nile.....	Agapanthus
Loquat	Eriobotrya
Mock Orange	Philadelphus
Mock Orange	Pittosporum
Mock Orange	Choisya
Mosquito Bush	Lopezia
Myrtle	Myrtus
Natal Plum	Carissa
Night Blooming Jasmine	Cestrum
Oleander	Nerium
Orange Jessamine	Murraea
Orchid Tree	Bauhinia
Oregon Grape	Mahonia
Parrot Feather	Beloperone
Passion Flower—Vine.....	Passiflora
Persian Lilac	Syringa
Pine	Pinus
Pineapple Guava	Feijoa
Pomegranate	Punica
Portugal Laurel	Prunus
Potato Vine	Solanum
Primrose Jasmine	Jasminum
Princess Flower	Pleroma
Privet	Ligustrum
Queen's Wreath	Antigonon
Quince	Cydonia
Rice Paper Plant.....	Aralia
Rosa de Montana	Antigonon
Rosemary	Rosmarinus
Sacred Bamboo	Nandina
Sea Urchin Plant	Hakea
St. John's Bread.....	Ceratonia
Shrimp Plant	Beloperone
Silk Oak	Grevillea
Silver Lace Vine.....	Polygonum
Snow Ball	Viburnum
Spanish Jasmine	Jasminum
Spanish Sun Rose	Helianthemum
Star Bush	Turraea
Strawberry Tree	Arbutus
Sweet Broom	Genista
Sweet Gum	Liquidambar
Sweet Olive	Osmanthus
Sweet Pea Shrub	Polygala
Sweet Spire	Itea
Syringa	Philadelphus
Trumpet Vine	Tecoma or Eignonia
Victorian Box	Pittosporum
Virginia Creeper	Ampelopsis
Wax Flower	Chamaelaucium
Wax Plant	Coprosma
Wisteria Vine	Securidaca



Efficient, trained help, pot up Monrovia Lining Out Stock

PRICES SUBJECT TO CHANGE WITHOUT NOTICE



ROSEDALE'S BOUGAINVILLEA, BARBARA KARST



monrovia
Nursery Co.

DUARTE ROAD AND MYRTLE AVE.
MONROVIA, CALIF.